



REHASENSE



ICON 60

THE ACTIVE WHEELCHAIR



+49 2821 590 8587

info@rehasense.com

www.rehasense.com

ICON 60

THE ACTIVE WHEELCHAIR



NEW:

The new ICON 60 manual wheelchair is one of the most adjustable wheelchairs currently available. This latest addition to the REHASENSE portfolio which features a lightweight rigid 7000 Series Aluminium Alloy frame and carbon fibre side panels has been designed to enable the user to adjust various elements of the chair to suit their individual needs. The frame length and seat angle are adjustable and for maximum comfort, the backrest - which is foldable to assist with transporting the ICON 60 by car - can be adjusted forward by up to 20° or backwards by up to 10°.

FEATURES AT A GLANCE

- Lightweight rigid frame wheelchair
- Seat width 36-44 cm, front width 26-34 cm, footrest width 19-27 cm
- Adjustable seat height (47,5-50 cm) and centre of gravity
- Front wheels angle adjustable
- Easily adjustable support bands for seat and backrest cushions
- Handles can be mounted

SIZES & COLOURS

Large: White, Silver, Gold, Black matt



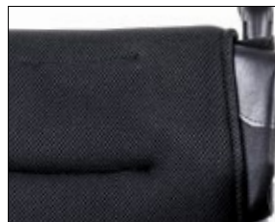
TECHNICAL DETAILS

Weight from:	Transport weight:	SWL (Safe Weight Limit)	Seat widths	Seat depth	Front frame angle (in deg)	Seat angle (in deg)	Backrest angle (in deg)	Front seat height	Rear seat height	Footrest Height	Center of gravity adjustment	Backrest height
9.0 kg	5.8 kg	120 kg	36-44 cm	40-46 cm (1.5 cm increment)	90° (to the seat)	5°	front: +8° back: up to -6°	50 cm (+ 3-5 cm cushion, 3 positions with 1.2 cm increment)	46 cm (+ 3-5 cm cushion, 3 positions with 2.5 cm increment)	4 positions (1.5 cm increment)	6 positions (1.3 cm increment)	6 positions (1.3 cm increment)

SPECIAL FEATURES



Backrest options: straight closed with or without foldable handles



Basic or sports seat made of mesh fabric. Leather seats available in various colours



Side panel made from Carbon fibre with or without fender: fixed, foldable, removable or high adjustable



Open footplate. Footplate with carbon fibre plate as option



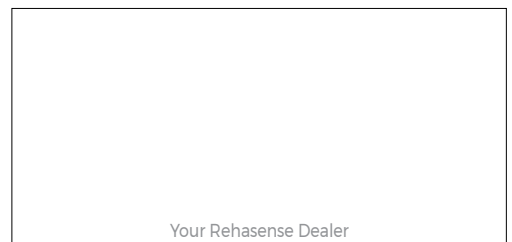
Horizontal hand brake. Vertical sport brake as option



ICON 60 with TRACK WHEEL



ICON 60 with PAWS



Rehasense's quality management complies with both the ISO 9001 and ISO 13485 standards, as confirmed by TÜV NORD. Rehasense's medical devices are CE-marked and meet the requirements of EU Regulation 2017/745 (MDR).

