

**TAYST**<sup>®</sup>

Model:V01

PATENTED WATERPROOF  
GPS WATCH TRACKER



# Main Features

Superb low power consumption

Support GPS/LBS/AGPS positioning, Wifi positioning optional

Two way voice call

SOS

Voice message

Multiple adjustable Geo-fences

Vivid tracking route playback

Pedometer

Auto Answer Function

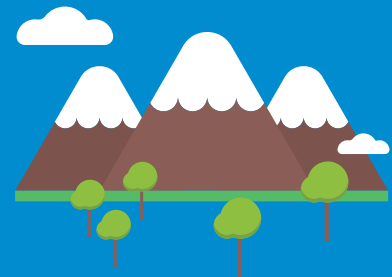
Watch band taking off alarm

Security band lock optional

High grade waterproof

Magnet inductive charging

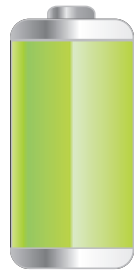
Free APP for Android and IOS



# Super low power consumption

Our patented algorithm improves the GPS position accuracy greatly and enables the watch with super low power consumption performance.

The algorithm offers accurate tracking route and instant Geo-fence alert.



Our power consumption



Others

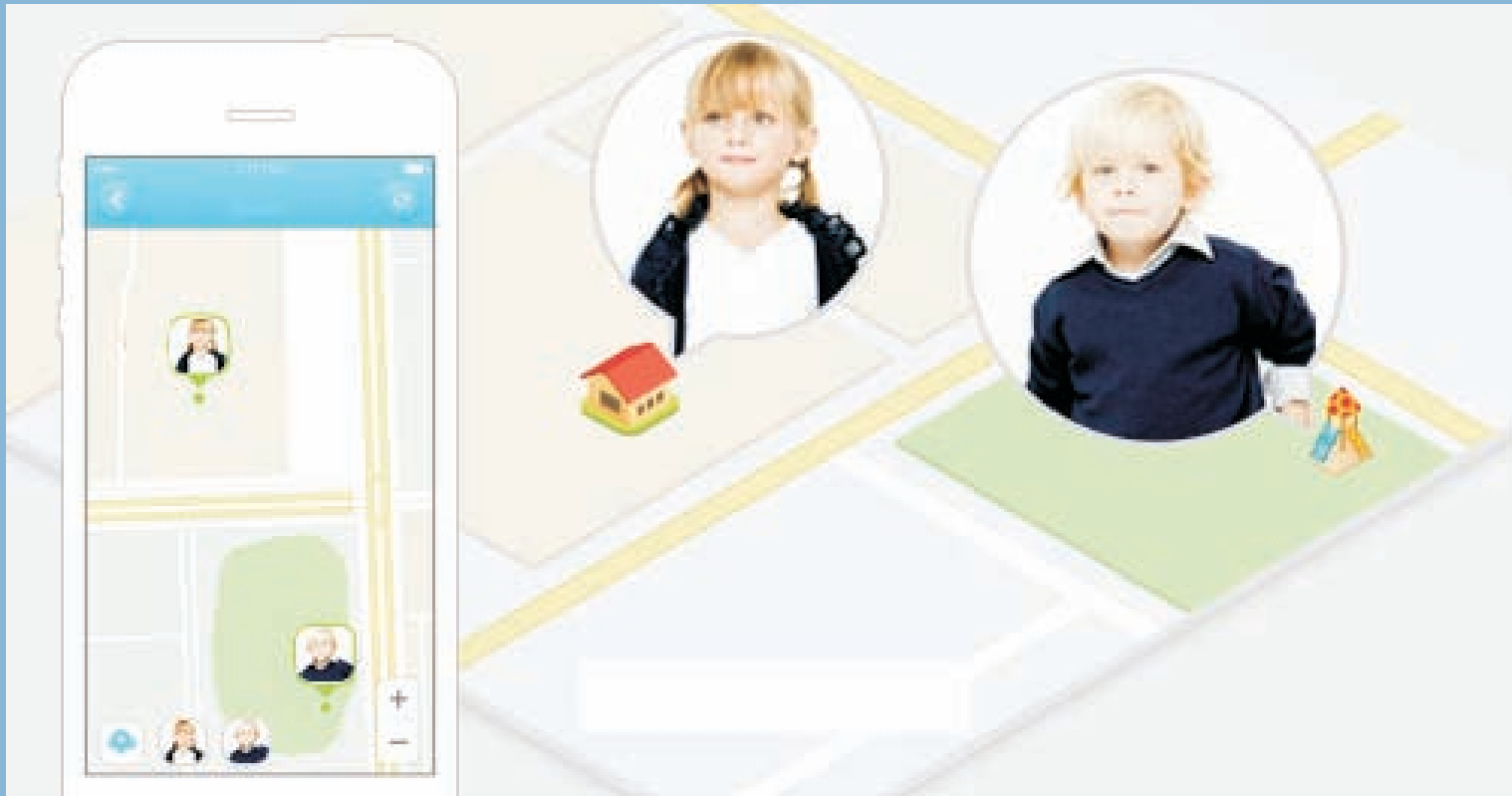
GSM worldwide network  
Quad band:850/900/1800/1900

Two way voice call  
Talk up to 16 authorized numbers pre-set  
in APP since it is also a watch phone



# Support GPS/LBS/AGPS positioning, Wifi positioning optional

- Give your cared ones a sense of independence while staying informed of their whereabouts.
- Multiple positioning modes help you to check location no matter the wearer is indoor or outdoor



# SOS

One button to SOS when emergency  
Automatically dial major numbers (pre-set in APP)  
in turn, until one of them answered



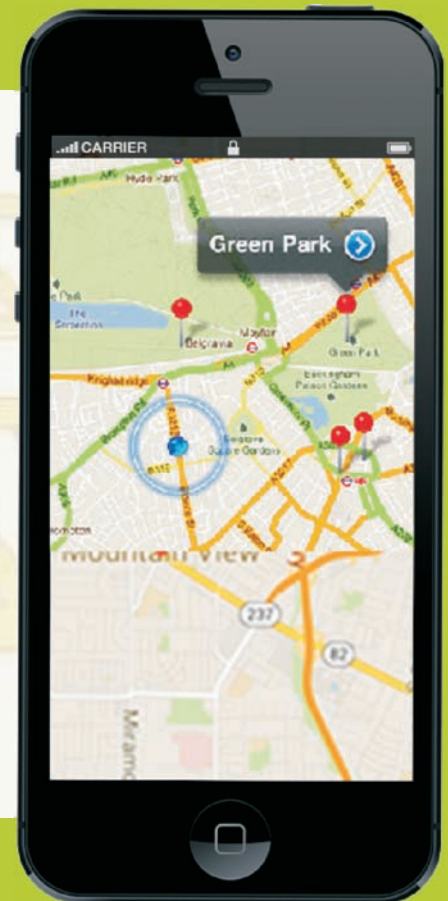
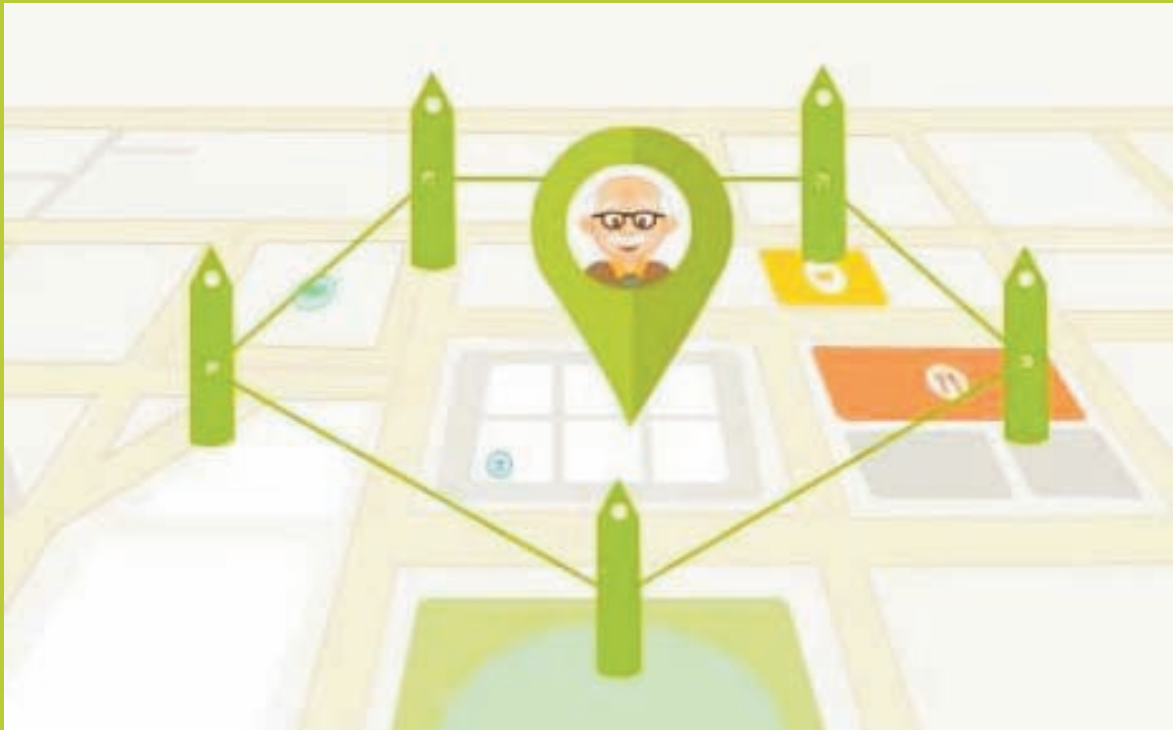
# Voice message

Voice message is a good choice as we can not type on the watch for SMS



# Multiple adjustable Geo-fences

- Geo-fence shape in Circular or Rectangle
- Fence Size adjustable
- APP will get notification once the watch wearer entered/exited the fence

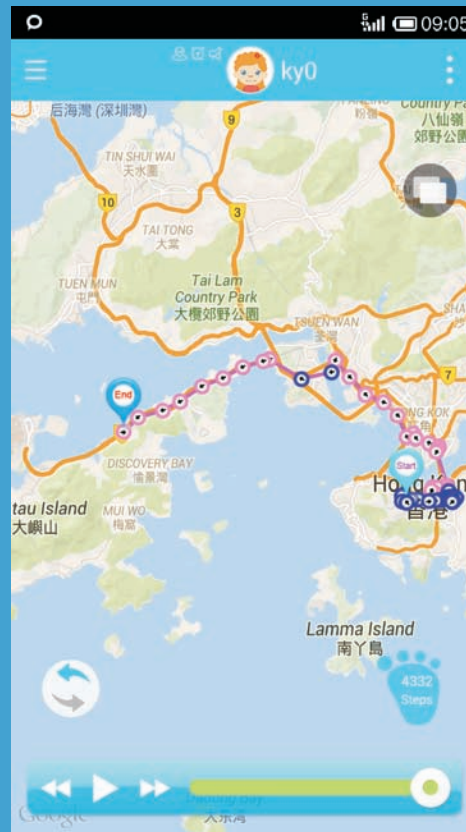




# Vivid tracking route playback

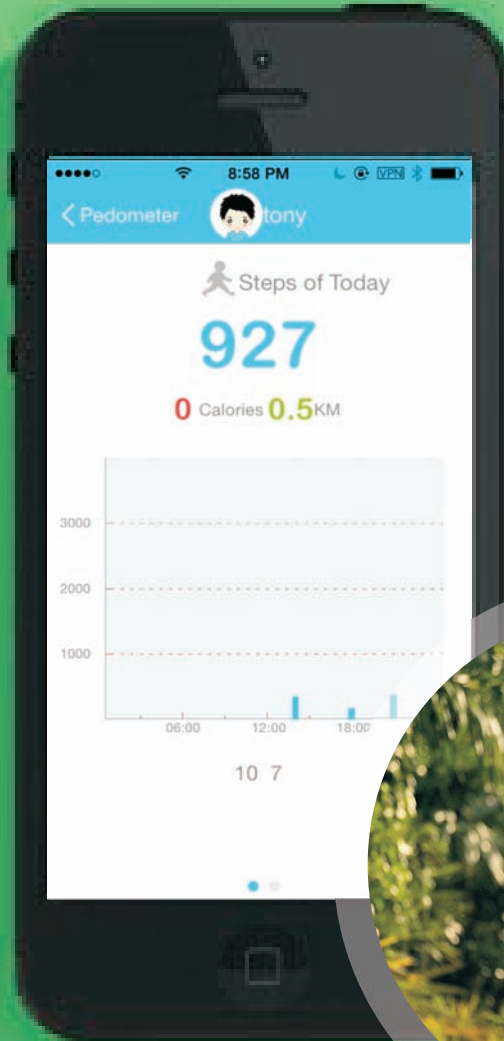
Accurate tracking route.

Play the tracking route vividly like video,  
for assigned time period.



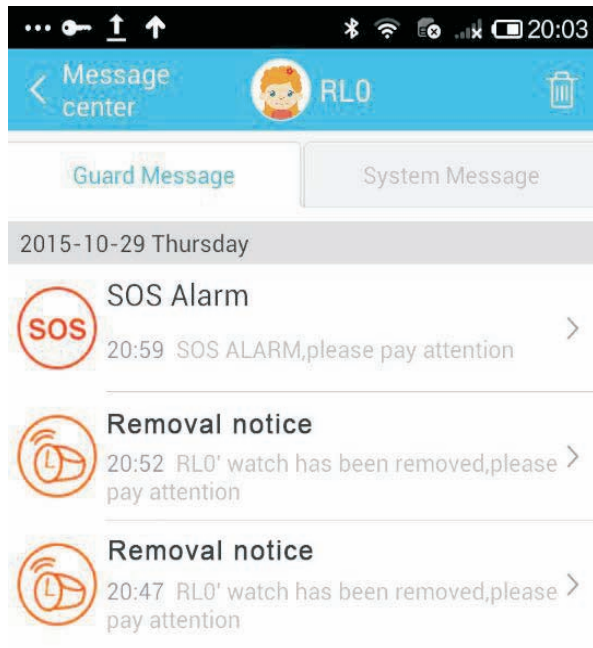
# Pedometer

keep healthy, check steps of last 7 days and calories burned.



# Watch band taking off alarm

APP will get a notification if the watch wearer remove the watch from hand



# Auto Answer Function

When enabled, watch automatically answers to allow caregivers to audibly monitor environment



# Security band lock optional

For Alzheimers, they may want to remove the watch and throw it away, with the security band lock, the watch stays with them, and caregiver can monitor their whereabouts.



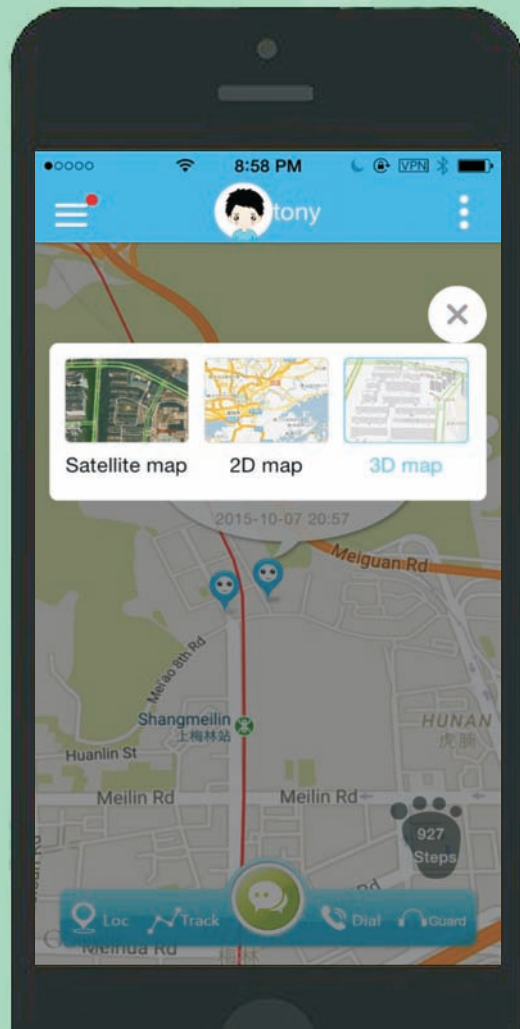
# High Grade Waterproof



# Magnet inductive charging

Improve waterproof performance and help elders to charge easier, compared to USB port charging

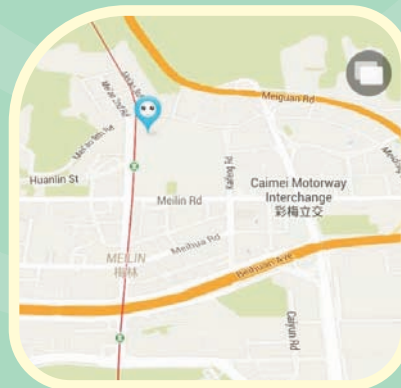




Satellite map



2D map



3D map

Satellite/3D/2D  
google map display





# Other features

Battery notification

Vibrate/Ring/ Mute Mode

Remote turn off

Watch tracking

Free APP for Android and IOS

Alarm clock

TPU/Silicon band optional

# Hardware Parameter

GPS: Ublox-5M module

GSM :MT6261

3D motion sensor: BOSCH

GPS Sensitivity: -159dbm

Battery capacity: 420mah polymer battery

Safe and comfortable TPU/Silicon bracelet

Sleep mode to save power

Color:Blue,Pink,Black





# Our certificates are complete.

Patent Certification The product of this company has been approved by competent authorities.



Patent

Patent No.: 201530340157.4



CE



Rohs



ISO 9001

## Dustless Assembly workshop

