

Technique &
Performance



Endurance
& Durability

PRODUCT CATALOG



Know-how &
Customization



Safety &
Quality



With this catalogue it is our goal to ease the understanding of ROLTEC 's productline in order to be able to choose the best solution when building an electric wheelchair.

Nothing is perfect but ROLTEC always strives to find the optimal solution for the end-user.

Our solutions and different chair-constructions are the result of 50 years of experience working closely with clients and therapists.

For more than 50 years ROLTEC has gained experience by gathering input from wheelchair users and therapists and for many years we have been the market leader for rear-wheel drive wheelchairs.



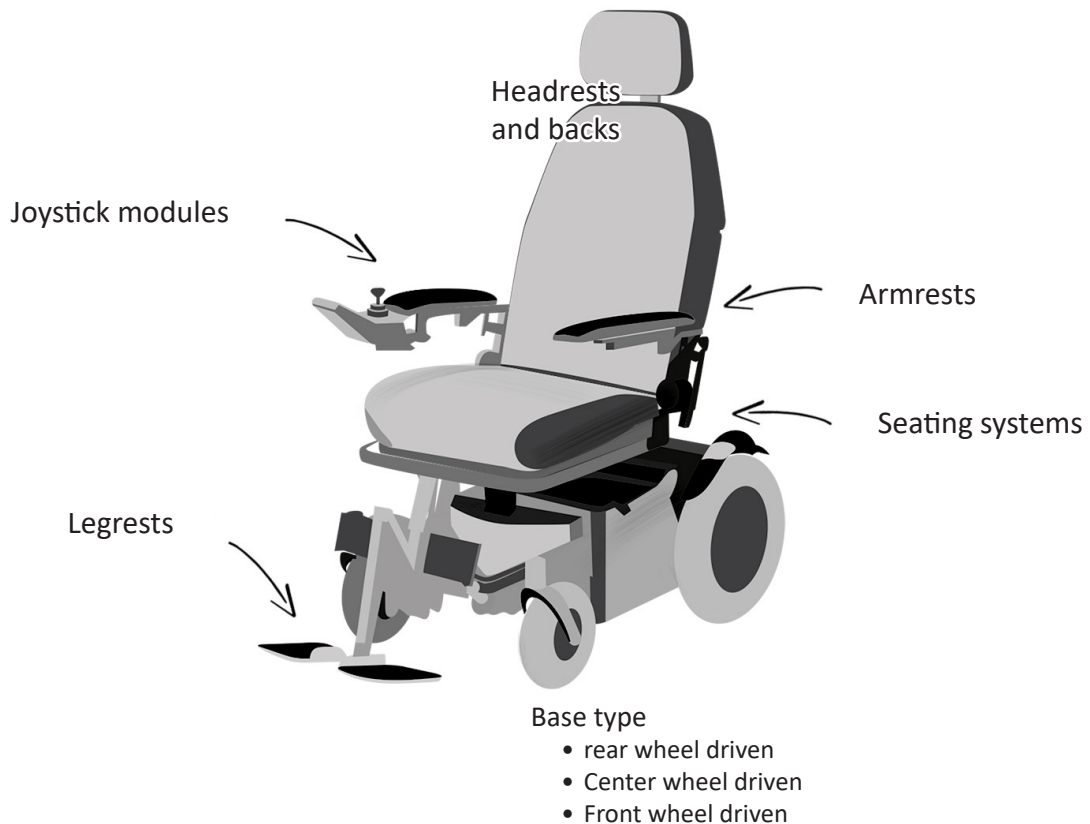
Dennis Holmgaard
Owner -CEO



Thomas Pedersen
Owner - Sales and Marketing



How to build your ROLTEC chair...



ROLTEC's electric wheelchair are build upon a module-system that can be combined to the exact need of the client.

The clients physique and needs - where and how the chair must perform - all issues that must be addressed, discussed and dealt with in order to build the optimal chair.

Give and take when deciding in which direction to go... but never compromise on quality...!

At Roltec we look forward to offer you the very best the market can offer. We will guide you through the decision process to achieve not only a usable chair - but a chair that in performance, usability, and quality will accomodate the clients physique and daily needs.

Our consultants are ready to guide you - to adjust and customize your choises until the optimal chair is decided on and build.



BASES PREPARED FOR LIFT	Moveo+ FRONT WHEEL DRIVE	CT4 REAR WHEEL DRIVE	HD- HEAVY DUTY REAR WHEEL DRIVE	PYTHON REAR WHEEL DRIVE	VIPER FRONT WHEEL DRIVE	BOA2 * CENTER WHEEL DRIVE
WHEELS + MOTORS + SHIELD INCLUDED (Excl. batteries)	72295	70655	70674*	71090	71083	71492

* The Heavy Duty base is complete with 400W motors - 80 Ah batteries - massive flex tires and electronically reduced to a maximum speed of 9km/h. The lift is reinforced and reduced reg. height and backward tilt.

ADAPTIVE BASE	Moveo+ FRONT WHEEL DRIVE	CT4 REAR WHEEL DRIVE	HD- HEAVY DUTY REAR WHEEL DRIVE	PYTHON REAR WHEEL DRIVE	VIPER FRONT WHEEL DRIVE	BOA2 CENTER WHEEL DRIVE
ELECTRICALLY OPERATED LIFT & TILT	71882	72075	72076 (reinforced)	72075	72077***	72065
Extra 14gr/14cm**	72018					72018
Seat displacement**	72129	72130		72130	72130	72129
Manuel base*	69284	69281	69282	69281	69283	69284

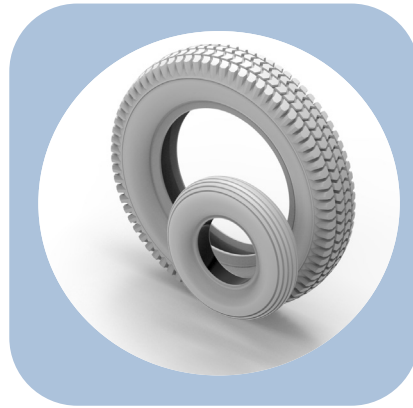
* The manuel base must only be chosen when lift and tilt functions and electrically operated seat functions are not required!

** This will increase the chairs height with 2 cm

*** A lift/tilt like the HD chair is also available for this model 73407.

Control package	Moveo+ FRONT WHEEL DRIVE	CT4 REAR WHEEL DRIVE	HD- HEAVY DUTY REAR WHEEL DRIVE	PYTHON REAR WHEEL DRIVE	VIPER FRONT WHEEL DRIVE	BOA2 CENTER WHEEL DRIVE
ISM6	72099	72072	72072	72072	72101	72063
ISM8	72100	72074	72074	72074	72102	72064

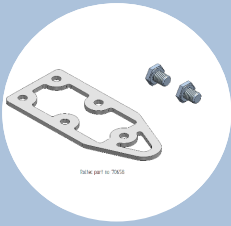
Tyre:



TYRE	Tyres to spare parts sales (without tube)	These item no. must be used to configure the chair					
		Moveo+ FRONT WHEEL DRIVE	CT4/Python REAR WHEEL DRIVE	HD- HEAVY DUTY REAR WHEEL DRIVE	PYTHON REAR WHEEL DRIVE	VIPER FRONT WHEEL DRIVE	BOA2 CENTER WHEEL DRIVE
Drive wheel(3,00-8"): Gray inflatable tyre	69262	Q-71597	Q-71597		Q-71597	Q-71597	Q-71597
Drive wheel(3,00-8"): Gray flexel tyre	71603	Q-71598	Q-71598	Q-71598	Q-71598	Q-71598	Q-71598
Drive wheel(3,00-8"): Black inflatable tyre	71607	Q-72306	Q-72306		Q-72306	Q-72306	Q-72306
Drive wheel(3,00-8"): Black flexel tyre	71606	Q-73396	Q-73396	Q-73396	Q-73396	Q-73396	Q-73396
Castor wheel(2,50x3): Gray inflatable tyre	71608		Q-71599		Q-71599		
Castor wheel(2,50x3): Gray flexel tyre	71609		Q-71600		Q-71600		
Castor wheel(2,50x3): Black inflatable tyre	72310		Q-73357		Q-73357		
Castor wheel(2,50x3): Black flexel tyre	72313		Q-73395		Q-73395		
Castor wheel(2,50x3): Gray HD-flexel tyre	73397		Q-73373	Q-73373	Q-73373		
Castor wheel(7x1,75): Gray flexel tyre	73350	Q-71601					Q-71601
Castor wheel(7x1,75): Black flexel tyre	73351	Q-72305					Q-72305
Castor wheel(200x50): Gray flexel tyre	72314					Q-71602	
Castor wheel(200x50): Black flexel tyre						Q-72337	

Ass. parts

Dahl kit



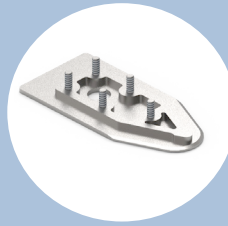
Dahl kit to viper/
CT4/Python/HD

Art. nr.

Dahl kit

70658

Dahl plate



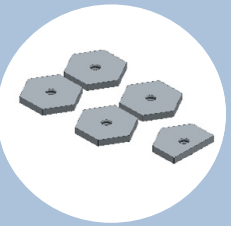
Locking plate with
bolts and 8mm
spacer for Dahl

Art. nr.

Dahl plate

90253

Dahl nuts



Wheelchair-specific
adaptation set for the
Dahl Docking System.

Art. nr.

Dahl nuts (Boa2/Moveo+)

90252

Offset bracket r-seat



Offset bracket for
clamp R-Seat

Art. nr.

Offset bracket

72211

Wide Front subframe



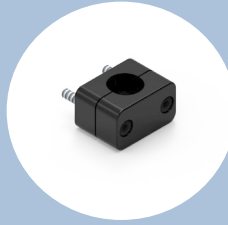
Extra charge f.
wide Front sub-
frame normal is 49
cm. The width is
59 cm.

Art. nr.

CT4/Python/HD

67898

Clamp 22mm



Clamp for back (2
parts with bolts)

Art. nr.

Clamp

72160

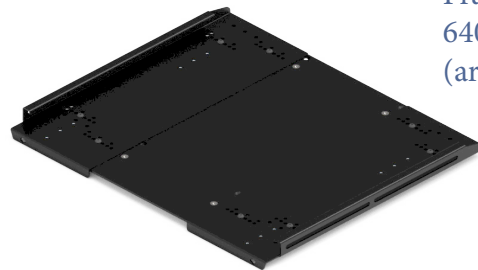
R-Seat seatframe

Seat frame	To Boa2- Moveo+	To Viper- CT4- HD-Py- thon
W:400-520mm	71432	71951
W:520-640mm	71952	71952



Seat frame
W:400-520mm
(art. no 71951)

Frame	To Boa2- Moveo+	To Viper- CT4- HD-Py- thon
W:400-520mm	73388	73389
W:520-640mm	73390	73390



Frame W:520-
640mm
(art. no 73390)

R-Seat back Tilt Manually or electrically

Tilt of back	W:400- 520mm	W:520- 640mm
Tilting (actuator) 45°	71526	71957
Tilting (actuator) 80°	71579*	71956
Manuel tilting of back	71491	71955

* If on Boa2 needed the seat to be fold-
ed down to horisontal position. (Ask
our consultants)

NB!

Trap protection for the BOA and Moveo+
as a kit - 71580

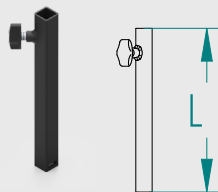


Actuator
for tilting the
back rest 45 °
(art. no 71526)



Accessories	Art. no
Headrest bracket Standard+ Headrest standard	73380

If something else is to be used, it must be configured.



Headrest mounting tube	Art. no
Length 20cm	71958
Length 30cm	71959

20cm is used for standard electric back



Accessories	Art. no
Headrest bracket Standard	71972

Headrest

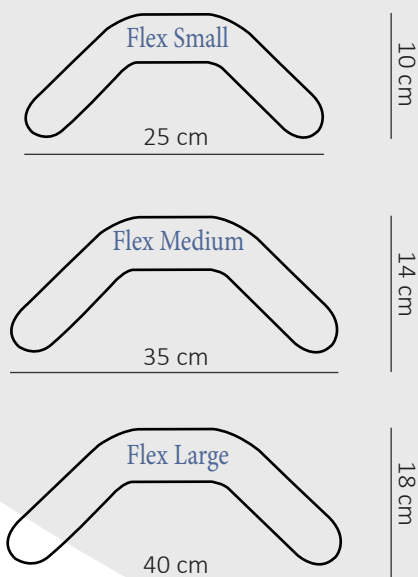
The standard, junior and high model headrest is suitable for the active and passive wheelchair user and ensures a correct seating position that provides the head support.



Headrest	Art. no
Standard - Height 13 cm/width 26 cm	A80021-13-26
Junior - Height 11 cm/width 22 cm	A80021-11-22
High - Height 16 cm/width 26 cm	A80021-16-26

Flexible headrest

This headrest is suitable for the passive wheelchair user and ensures a correct seating position. The adjustable, flexible wings support the head backwards and sideways.



Headrest type "Flex"	Art. no
Flex Small - Height 9 cm/width 25 cm	A80022-09-25
Flex Medium - Height 12 cm/width 35 cm	A80022-12-35
Flex Large - Height 12 cm/width 40 cm	A80022-12-40

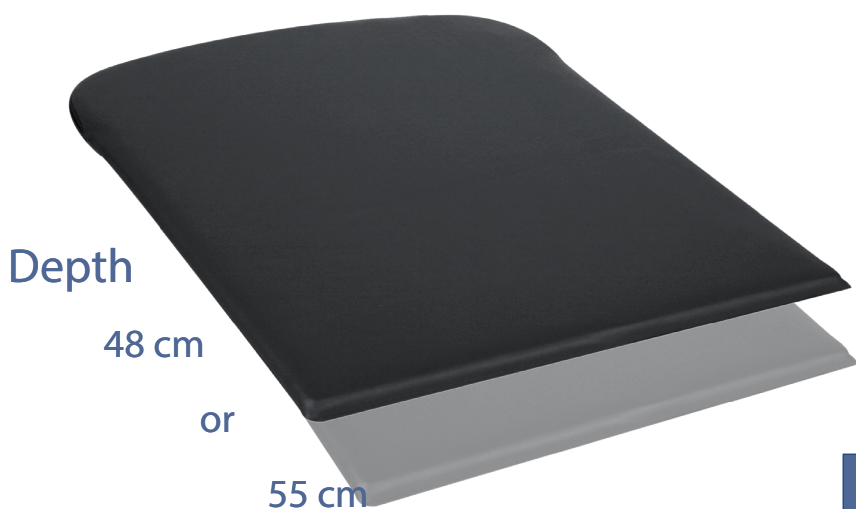
Edge for extra depth	W:400-460mm	W:460-520mm	W:520-580mm	W:580-640mm
Plate	73364	73365	73366	73367



Edge for extra depth
W:400-460mm
(art. no 73364)

Webbed seat pan

This seat pan is suitable as a universal solution, making it possible for various separate seating cushions to be positioned on different fixed-frame wheelchairs. Suitable for wheelchair users with a very high risk of developing pressure ulcers (decubitus ulcers). The mounting holes for the thresholds are pre-drilled, making it easy to mount a front or rear threshold.



Art. no	Seat Pan	
	Depth 48 cm	Depth 55 cm
Width 40 cm	A80017-48-40	A80017-55-40
Width 42 cm	A80017-48-42	A80017-55-42
Width 44 cm	A80017-48-44	A80017-55-44
Width 46 cm	A80017-48-46	A80017-55-46
Width 48 cm	A80017-48-48	A80017-55-48
Width 50 cm	A80017-48-50	A80017-55-50
Width 52 cm	A80017-48-52	A80017-55-52
Width 54 cm	A80017-48-54	A80017-55-54
Width 56 cm	A80017-48-56	A80017-55-56
Width 58 cm	A80017-48-58	A80017-55-58
Width 60 cm	A80017-48-60	A80017-55-60
Width 62 cm	A80017-48-62	A80017-55-62
Width 64 cm	A80017-48-64	A80017-55-64

SEATS cushion AND BACKS

ProAir®

For all our backs and seats we have as a standard chosen the new and innovative fabric Pro Air® that ensures good airflow, high comfort and durability.



Guarantee for identical replacement

Every cushion, backrest, neck support etc. is from our factory labeled with a unique code that ensures that we at all times can replace worn out or destroyed parts with identical items.

“Optimum Comfort” seat cushion

The Optimum Comfort cushion is suitable for wheelchair users with a high risk of developing pressure ulcers (decubitus ulcers).

Thanks to its anatomical design, this seat provides good pressure distribution and stability and prevents the wheelchair user from sliding forwards.

(Height of cushion 9 cm)

“Comfort Visco” seat cushion

The Comfort Visco cushion is suitable for the wheelchair user with a high risk developing pressure ulcers (decubitus ulcers).

The Comfort Visco cushion is made with a viscoelastic memory foam insert that shapes itself to the body contours of the user through the user's weight and body heat.

The viscoelastic memory foam insert is exchangeable and can be replaced by a different type of viscoelastic insert at a later stage.

(Height of cushion 9 cm)



“Standard” seat cushion

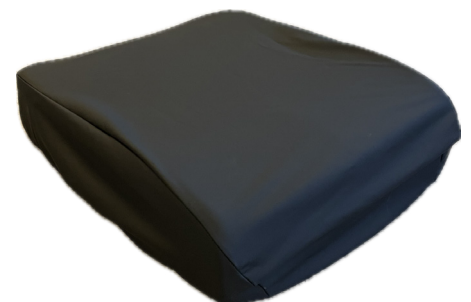
This cushion is suitable for the active wheelchair user, who appreciates the freedom of movement. Users with only a slight risk of developing pressure ulcers (decubitus ulcers)

(Height of cushion 7 cm)



Seat width	Standard Cushion		Optimum Comfort		Comfort Visco	
	Seat dept 48 cm	Seat dept 55 cm	Seat dept 48 cm	Seat dept 55 cm	Seat dept 48 cm	Seat dept 55 cm
40 cm	A80012-48-40	A80012-55-40	A80014-48-40	A80014-55-40	A80015-48-40	A80015-55-40
42 cm	A80012-48-42	A80012-55-42	A80014-48-42	A80014-55-42	A80015-48-42	A80015-55-42
44 cm	A80012-48-44	A80012-55-44	A80014-48-44	A80014-55-44	A80015-48-44	A80015-55-44
46 cm	A80012-48-46	A80012-55-46	A80014-48-46	A80014-55-46	A80015-48-46	A80015-55-46
48 cm	A80012-48-48	A80012-55-48	A80014-48-48	A80014-55-48	A80015-48-48	A80015-55-48
50 cm	A80012-48-50	A80012-55-50	A80014-48-50	A80014-55-50	A80015-48-50	A80015-55-50
52 cm	A80012-48-52	A80012-55-52	A80014-48-52	A80014-55-52	A80015-48-52	A80015-55-52
54cm	A80012-48-54	A80012-55-54	A80014-48-54	A80014-55-54	A80015-48-54	A80015-55-54
56 cm	A80012-48-56	A80012-55-56	A80014-48-56	A80014-55-56	A80015-48-56	A80015-55-56
58 cm	A80012-48-58	A80012-55-58	A80014-48-58	A80014-55-58	A80015-48-58	A80015-55-58
60 cm	A80012-48-60	A80012-55-60	A80014-48-60	A80014-55-60	A80015-48-60	A80015-55-60
62 cm	A80012-48-62	A80012-55-62	A80014-48-62	A80014-55-62	A80015-48-62	A80015-55-62
64 cm	A80012-48-64	A80012-55-64	A80014-48-64	A80014-55-64	A80015-48-64	A80015-55-64

Seat dept	Incontinence cover for cushion				
	Seat width 38 cm	Seat width 40 cm	Seat width 45 cm	Seat width 50 cm	Seat width 55 cm
55 cm	AN-20766	AN-21018	AN-20529	AN-20531	A N-20780

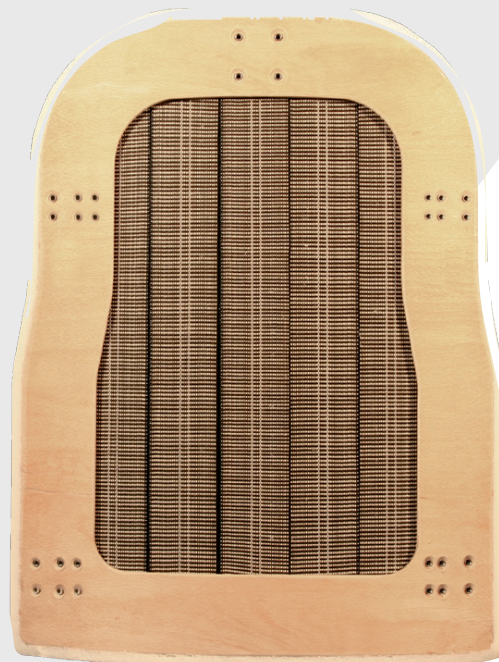


4 Different back bases...



A. Standard

Stable base without adjustment.



B. Webbed

Spring base which adapts itself to the contours of the body.



C. Strapped

Stable top with multiple straps of adjustability for posture correction.



D. Flexible strapped

Flexible still stable back with multiple straps that gives additional possibilities for correct adjustability and positioning.

4 Different back cushions...

“Free”

The Free backrest is suitable for the active wheelchair user and ensures a lot of freedom of movement.

“Active”

The active backrest is suitable for the active wheelchair user and ensures a lot of freedom of movement and a correct seating position by its low shaped lateral support.

“Xtra deep active”

This backrest is like the "Active" developed for the active user who has a need for even more lateral support without losing the freedom of movement in the shoulder and arm region.

“Passive”

The passive backrest is suitable for the passive wheelchair user and ensures a stable seating position by its high shaped lateral support.

A

Standard

Stable base without adjustment.

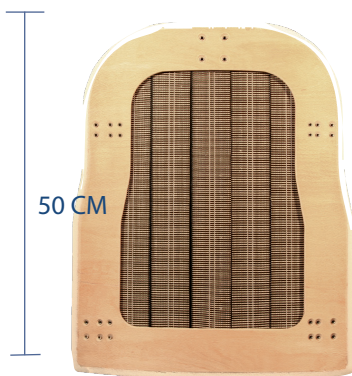


SEAT WIDTH	A - Standard back base height 50 cm			
	Free	Active	Deep Active	Passive
40 cm	A80000-50-40	A80004-50-40	A80029-50-40	A80008-50-40
42 cm	A80000-50-42	A80004-50-42	A80029-50-42	A80008-50-42
44 cm	A80000-50-44	A80004-50-44	A80029-50-44	A80008-50-44
46 cm	A80000-50-46	A80004-50-46	A80029-50-46	A80008-50-46
48 cm	A80000-50-48	A80004-50-48	A80029-50-48	A80008-50-48
50 cm	A80000-50-50	A80004-50-50	A80029-50-50	A80008-50-50
52 cm	A80000-50-52	A80004-50-52	A80029-50-52	A80008-50-52
54 cm	A80000-50-54	A80004-50-54	A80029-50-54	A80008-50-54
56 cm	A80000-50-56	A80004-50-56	A80029-50-56	A80008-50-56
58 cm	A80000-50-58	A80004-50-58	A80029-50-58	A80008-50-58
60 cm	A80000-50-60	A80004-50-60	A80029-50-60	A80008-50-60
62 cm	A80000-50-62	A80004-50-62	A80029-50-62	A80008-50-62
64 cm	A80000-50-64	A80004-50-64	A80029-50-64	A80008-50-64

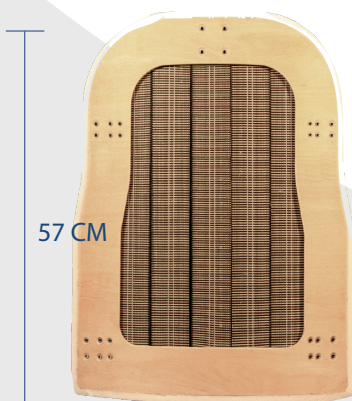
SEAT	A - Standard back base height 57cm			
	Free	Active	Deep Active	Passive
40 cm	A80000-57-40	A80004-57-40	A80029-57-40	A80008-57-40
42 cm	A80000-57-42	A80004-57-42	A80029-57-42	A80008-57-42
44 cm	A80000-57-44	A80004-57-44	A80029-57-44	A80008-57-44
46 cm	A80000-57-46	A80004-57-46	A80029-57-46	A80008-57-46
48 cm	A80000-57-48	A80004-57-48	A80029-57-48	A80008-57-48
50 cm	A80000-57-50	A80004-57-50	A80029-57-50	A80008-57-50
52 cm	A80000-57-52	A80004-57-52	A80029-57-52	A80008-57-52
54 cm	A80000-57-54	A80004-57-54	A80029-57-54	A80008-57-54
56 cm	A80000-57-56	A80004-57-56	A80029-57-56	A80008-57-56
58 cm	A80000-57-58	A80004-57-58	A80029-57-58	A80008-57-58
60 cm	A80000-57-60	A80004-57-60	A80029-57-60	A80008-57-60
62 cm	A80000-57-62	A80004-57-62	A80029-57-62	A80008-57-62
64 cm	A80000-57-64	A80004-57-64	A80029-57-64	A80008-57-64

B Webbed

Spring base which adapts itself to the contours of the body.



SEAT	B - Webbed back base height 50cm			
	Free	Active	Deep Active	Passive
40 cm	A80001-50-40	A80005-50-40	A80030-50-40	A80009-50-40
42 cm	A80001-50-42	A80005-50-42	A80030-50-42	A80009-50-42
44 cm	A80001-50-44	A80005-50-44	A80030-50-44	A80009-50-44
46 cm	A80001-50-46	A80005-50-46	A80030-50-46	A80009-50-46
48 cm	A80001-50-48	A80005-50-48	A80030-50-48	A80009-50-48
50 cm	A80001-50-50	A80005-50-50	A80030-50-50	A80009-50-50
52 cm	A80001-50-52	A80005-50-52	A80030-50-52	A80009-50-52
54 cm	A80001-50-54	A80005-50-54	A80030-50-54	A80009-50-54
56 cm	A80001-50-56	A80005-50-56	A80030-50-56	A80009-50-56
58 cm	A80001-50-58	A80005-50-58	A80030-50-58	A80009-50-58
60 cm	A80001-50-60	A80005-50-60	A80030-50-60	A80009-50-60
62 cm	A80001-50-62	A80005-50-62	A80030-50-62	A80009-50-62
64 cm	A80001-50-64	A80005-50-64	A80030-50-64	A80009-50-64



SEAT	B - Webbed back base height 50cm			
	Free	Active	Deep Active	Passive
40 cm	A80001-57-40	A80005-57-40	A80030-57-40	A80009-57-40
42 cm	A80001-57-42	A80005-57-42	A80030-57-42	A80009-57-42
44 cm	A80001-57-44	A80005-57-44	A80030-57-44	A80009-57-44
46 cm	A80001-57-46	A80005-57-46	A80030-57-46	A80009-57-46
48 cm	A80001-57-48	A80005-57-48	A80030-57-48	A80009-57-48
50 cm	A80001-57-50	A80005-57-50	A80030-57-50	A80009-57-50
52 cm	A80001-57-52	A80005-57-52	A80030-57-52	A80009-57-52
54 cm	A80001-57-54	A80005-57-54	A80030-57-54	A80009-57-54
56 cm	A80001-57-56	A80005-57-56	A80030-57-56	A80009-57-56
58 cm	A80001-57-58	A80005-57-58	A80030-57-58	A80009-57-58
60 cm	A80001-57-60	A80005-57-60	A80030-57-60	A80009-57-60
62 cm	A80001-57-62	A80005-57-62	A80030-57-62	A80009-57-62
64 cm	A80001-57-64	A80005-57-64	A80030-57-64	A80009-57-64

C Strapped

Stable top with multiple straps of adjustability for posture correction.



SEAT	C - Strapped back base height 50 cm			
	Free	Active	Deep Active	Passive
40 cm	A80002-50-40	A80006-50-40	A80031-50-40	A80010-50-40
42 cm	A80002-50-42	A80006-50-42	A80031-50-42	A80010-50-42
46 cm	A80002-50-44	A80006-50-44	A80031-50-44	A80010-50-44
44 cm	A80002-50-46	A80006-50-46	A80031-50-46	A80010-50-46
48 cm	A80002-50-48	A80006-50-48	A80031-50-48	A80010-50-48
50 cm	A80002-50-50	A80006-50-50	A80031-50-50	A80010-50-50
52 cm	A80002-50-52	A80006-50-52	A80031-50-52	A80010-50-52
54 cm	A80002-50-54	A80006-50-54	A80031-50-54	A80010-50-54
56 cm	A80002-50-56	A80006-50-56	A80031-50-56	A80010-50-56
58 cm	A80002-50-58	A80006-50-58	A80031-50-58	A80010-50-58
60 cm	A80002-50-60	A80006-50-60	A80031-50-60	A80010-50-60
62 cm	A80002-50-62	A80006-50-62	A80031-50-62	A80010-50-62
64 cm	A80002-50-64	A80006-50-64	A80031-50-64	A80010-50-64

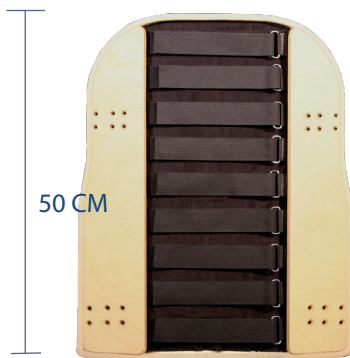


SEAT	C - Strapped back base height 57 cm			
	Free	Active	Deep Active	Passive
40 cm	A80002-57-40	A80006-57-40	A80031-57-40	A80010-57-40
42 cm	A80002-57-42	A80006-57-42	A80031-57-42	A80010-57-42
44 cm	A80002-57-44	A80006-57-44	A80031-57-44	A80010-57-44
46 cm	A80002-57-46	A80006-57-46	A80031-57-46	A80010-57-46
48 cm	A80002-57-48	A80006-57-48	A80031-57-48	A80010-57-48
50 cm	A80002-57-50	A80006-57-50	A80031-57-50	A80010-57-50
52 cm	A80002-57-52	A80006-57-52	A80031-57-52	A80010-57-52
54 cm	A80002-57-54	A80006-57-54	A80031-57-54	A80010-57-54
56 cm	A80002-57-56	A80006-57-56	A80031-57-56	A80010-57-56
58 cm	A80002-57-58	A80006-57-58	A80031-57-58	A80010-57-58
60 cm	A80002-57-60	A80006-57-60	A80031-57-60	A80010-57-60
62 cm	A80002-57-62	A80006-57-62	A80031-57-62	A80010-57-62
64 cm	A80002-57-64	A80006-57-64	A80031-57-64	A80010-57-64

D

Flexible strapped

Flexible still stable back with multiple straps that gives additional possibilities for correct adjustability and positioning.

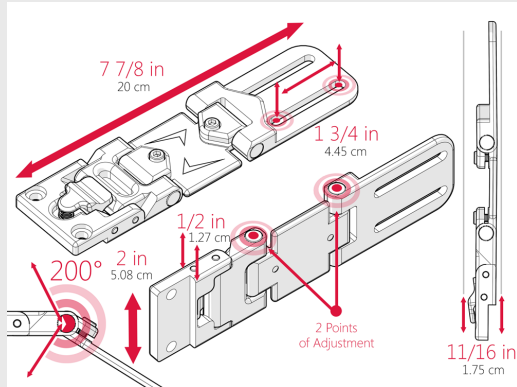


SEAT	D - Flexible Strapped back base height 50 cm			
	Free	Active	Deep Active	Passive
40 cm	A80003-50-40	A80007-50-40	A80032-50-40	A80011-50-40
42 cm	A80003-50-42	A80007-50-42	A80032-50-42	A80011-50-42
44 cm	A80003-50-44	A80007-50-44	A80032-50-44	A80011-50-44
46 cm	A80003-50-46	A80007-50-46	A80032-50-46	A80011-50-46
48 cm	A80003-50-48	A80007-50-48	A80032-50-48	A80011-50-48
50 cm	A80003-50-50	A80007-50-50	A80032-50-50	A80011-50-50
52 cm	A80003-50-52	A80007-50-52	A80032-50-52	A80011-50-52
54 cm	A80003-50-54	A80007-50-54	A80032-50-54	A80011-50-54
56 cm	A80003-50-56	A80007-50-56	A80032-50-56	A80011-50-56
58 cm	A80003-50-58	A80007-50-58	A80032-50-58	A80011-50-58
60 cm	A80003-50-60	A80007-50-60	A80032-50-60	A80011-50-60
62 cm	A80003-50-62	A80007-50-62	A80032-50-62	A80011-50-62
64 cm	A80003-50-64	A80007-50-64	A80032-50-64	A80011-50-64



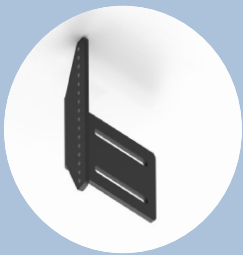
SEAT	D - Flexible Strapped back base height 57 cm			
	Free	Active	Deep Active	Passive
40 cm	A80003-57-40	A80007-57-40	A80032-57-40	A80011-57-40
42 cm	A80003-57-42	A80007-57-42	A80032-57-42	A80011-57-42
44 cm	A80003-57-44	A80007-57-44	A80032-57-44	A80011-57-44
46 cm	A80003-57-46	A80007-57-46	A80032-57-46	A80011-57-46
48 cm	A80003-57-48	A80007-57-48	A80032-57-48	A80011-57-48
50 cm	A80003-57-50	A80007-57-50	A80032-57-50	A80011-57-50
52 cm	A80003-57-52	A80007-57-52	A80032-57-52	A80011-57-52
54 cm	A80003-57-54	A80007-57-54	A80032-57-54	A80011-57-54
56 cm	A80003-57-56	A80007-57-56	A80032-57-56	A80011-57-56
58 cm	A80003-57-58	A80007-57-58	A80032-57-58	A80011-57-58
60 cm	A80003-57-60	A80007-57-60	A80032-57-60	A80011-57-60
62 cm	A80003-57-62	A80007-57-62	A80032-57-62	A80011-57-62
64 cm	A80003-57-64	A80007-57-64	A80032-57-64	A80011-57-64

Side support



You can configure your side support.

Base bracket



back angle for lateral support

Art. nr.
72109

extension



extension support for side support

Art. nr.
72108

Side hinge



Side hinge for side support

Art. nr.
72117

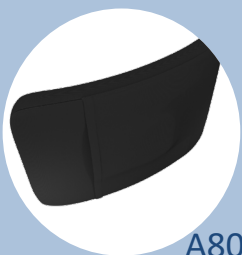
Side support cushion



Side support cushion, 7,5x12,5 cm

Art. nr.
A80036-7-12

Side support cushion



Side support cushion, 10x15 cm

Art. nr.
A80036-10-15

Ass. parts

Bag Hook



Bag Hook mounted on headrest

Art. nr.

Bag Hook

72098

Bag



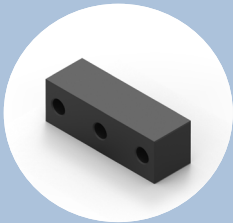
ROLTEC bag with hanger bracket

Art. nr.

piece

66562

spacers



Spacer blocks, with a hole spacing of 57 mm.

Art. nr.

piece 5mm

67500

piece 25mm

71413

Bracket for H- and Chest



R-SEAT top bracket, suitable for H- and Chest Harnessing with bag Hook mounted on headrest.

Art. nr.

piece

72186

R-Seat Rear Treshold



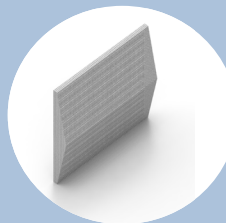
R-Seat Rear Treshold Polycarbonate Adjustable

Art. nr.

piece

A80020

Lumbar pillow for back



R-Seat V-shaped foam (Pantera 170)

Art. nr.

piece

A80035

Armrest base

The armrest consists of two separate art. no. (metalpart/base + cushion) which must be chosen:

Armrest base Fixed

The fixed armrest is adjustable vertically and horizontally



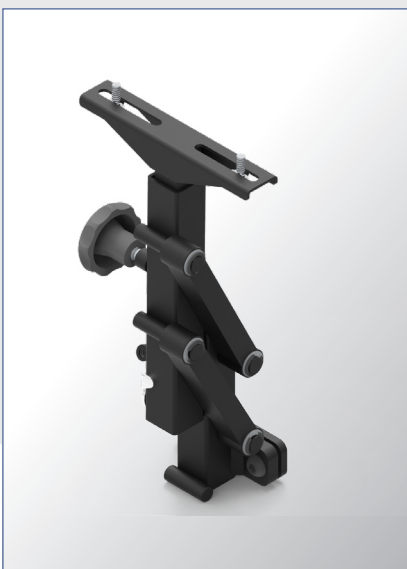
	Armrest base Fixed
Right	69278
Left	69279

Armrest base Collapsable

The complete collapsable armrest consists of the metal

1: The hard part – complete adjustable metalbase.

The fixed armrest is adjustable vertically and horizontally



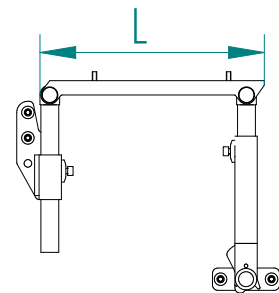
	Armrest base Collapsable
Right	69276
Left	69277

Armrest base, Foldable

The metal part – complete adjustable metalbase.



	Choose length			
	25 cm	30 cm	35 cm	40 cm
Right	66101	66102	66103	66104
Left	66105	66106	66107	66108

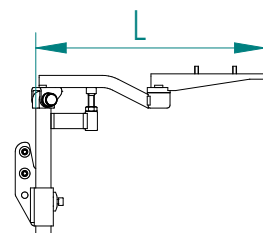


Armrest base, Upfoldable Obliquely

The metal part – complete adjustable metalbase.



	Choose length		
	30 cm	35 cm	40 cm
Right	68930	68970	68971
Left	68972	68931	68973



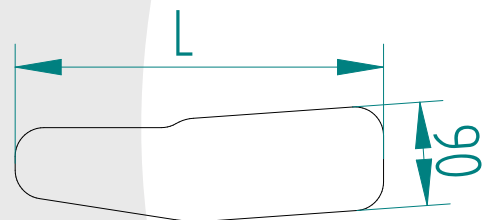
Armrest cushion with leather upholstery

The cushion can be positioned on base in different locations.
If reinforcement is needed a strong metalplate can be mounted under the wooden base.

For further finish and protection the armrest is available with complimentary aluminium edges.



Armrest cushion, leather	Choose length	
	32 cm	42 cm
Right	66604	66603
Left	66606	66605



Armrest ass.

Reinforcement metal sheet for armrest



Shaped black metal sheet mounts under wooden base of armrest cushion

Art. nr.

Length 32 cm.
Length 42 cm.

70912
70913

Alu. protection for armrest



Aluminium rim for armrest - 32 cm for finish and protection

Art. nr.

Length 32 cm.

66608

Alu. protection for armrest



Aluminium rim for armrest - 42 cm for finish and protection

Art. nr.

Length 42 cm.

66610

Upper arm support



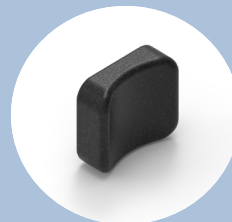
Upper arm support (bracket)

Art. nr.

Right
Left

72127
72128

Upper arm support



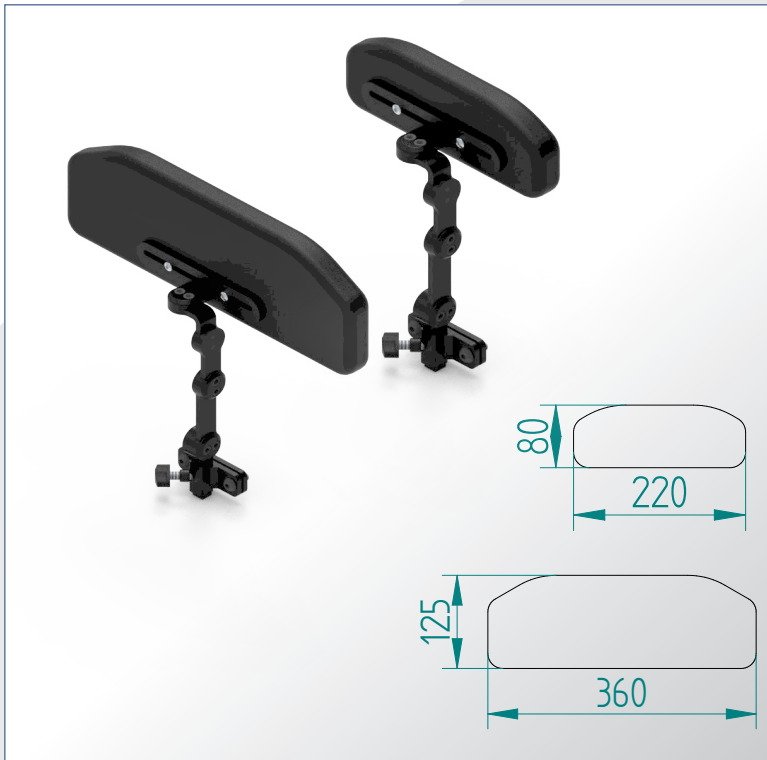
Upper arm pillow for bracket

Art. nr.

Pillow

A80037-7-8

Multi adjustable Thigh/hip support with cushion



The removable Thigh/hip support can be placed at the knee or at the hip. The adjustment possibilities in the bracket, ensures variable positioning of the pad.

The standard Thigh/hip cushion is suitable for both the active and passive wheelchair user and ensures a correct seating position.

By lining up the back of the side cushions with the pelvis and the front of the cushions with the knees, their wedge-shaped, flat design and comfortable foam offer the wheelchair user stability and correct posture.

The pillow is available in 2 sizes.

Cushion Small L=220mm

Cushion Large L=360mm

	Art. no
Support right or left - Standard	73381
Support right or left - leather - Large	73408

Fixation Plug for Thigh/hip support



Fixation Plug for Thigh/hip support

Art. nr.

Thigh/hip support base

71498

Cushion for Thigh/hip support



Cushion for Thigh/hip support, The pillow is available in 2 sizes.

Art. nr.

Support cushion R or L 220mm

A80028-22

Support cushion R or L 360mm

A80028-36

Support/hold ass.

Arm 75mm for Thigh/hip support



Bracket for Thigh/hip support -
Arm 75mm

Art. nr.

One piece

69293

Arm 50mm for Thigh/hip support



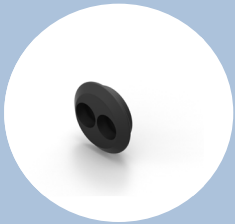
Bracket for Thigh/hip support -
Arm 50mm

Art. nr.

One piece

69294

Fixation Plug for Thigh/hip support



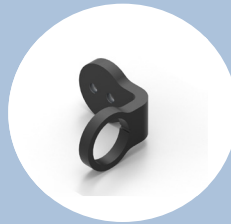
Fixation Plug for Thigh/hip
support

Art. nr.

One piece

71028

90° angle for Thigh/hip support



90° angle for Thigh/hip
support

Art. nr.

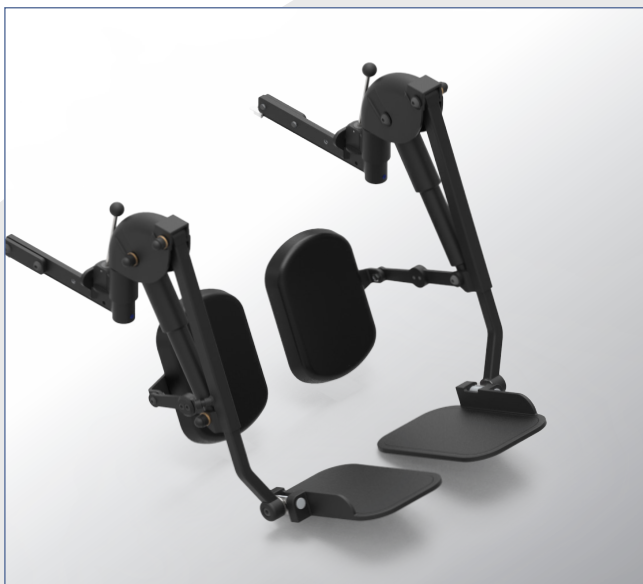
One piece

69296

N.B
The screws must be ordered next to, with Art nr. 60833.

Legrest elevation - Seperate

This legrest can be operated individually electrically or manually



Electric elevation w. calf support	Art. no
Right	68701
Left	68702
Complete set – right & left	67631

Side mounted powered legrests left and right. The legrest is "cordless" and connects automatically when mounted.

The legrest can be swung out to the side or completely removed.

No visible plugs or connecting wires - everything is hidden internally.

The leg supports can be mechanically adjusted up / down and backwards and forwards. The strong aluminum footrests are adjustable in angle - and back and forth.

The base plate is made of a strong aluminum plate with non-slip pattern on the top.



Manual elevation w. calf support	Art. no
Right	70996
Left	70997
Complete set – right & left	71038

Side mounted legrest is manually adjustable. Right and left.

The leg supports can swing out to the side or be completely removed as required.

The footrests fold up the sides, allowing additional space in front of the chair during transfers.

The leg supports can be mechanically adjusted up / down and backwards and forwards.

The position controlling the leg angle is adjustable. The strong aluminum footrests are also adjustable in angle.

Leg elevation - Centerlift

This leg support can only be operated parallel – electrically or manually



Center elevation - electrically controlled

	Art. no
Model B20 W: 400-520mm	71383
Model B20 W: 520-640mm	71618

Central mounted powered center legrest with length compensation.

This highly adjustable solution provides optimal space in front of the wheelchair as the footplates are collapsible.

The legrest can be adjusted in length and angle.

The leg support is equipped with two motors - one which elevates the leg rest and one that takes care of the displacement providing the desired and needed length compensation.

The two motors can be operated separately, or simultaneously achieving desired positions for driving, resting etc.

The leg supports can be elevated from zero to almost 90 degrees allowing the user to obtain a close to horizontal position.



Center elevation - manually controlled

	Art. no
Model B00 W: 400-520mm	71394
Model B00 W: 520-640mm	71619

Manually adjustable central mounted legrest.

This manual legrest from ROLTEC can be adjusted forward, backwards and up and down.

The footplate folds up against the chair.

The central mono legrest allows the user to be positioned in his chair with the knees bend as wished.



You can configure your Central legrest electric. The legrest must be composed of 4 parts, choice C can be avoided if there is no need for it.

Select below:

Choice A :base Width

Central legrest Base

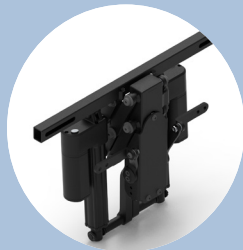


Central legrest electric elev. BASE (B20) w400-520mm

Art. nr.
71629

or

Central legrest Base

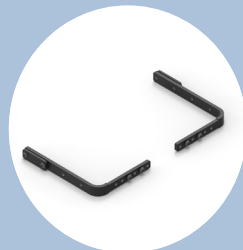


Central legrest electric elev. BASE (B20) W520-640mm

Art. nr.
71630

Choice B: Bracket for mounting

Cornorbraket

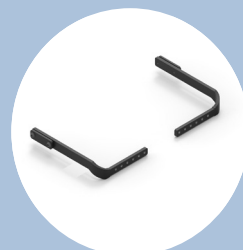


Cornorbraket mounting set straight

Art. nr.
71633

or

Cornorbraket



Cornorbraket mounting set displaced

Art. nr.
71634

Choice C: Calfsupport

calfsupport



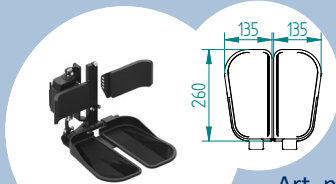
Calfsupport for cetral legrest Set left + right

Art. nr.

Standard 71636
Large 71637

Choice D: footrest

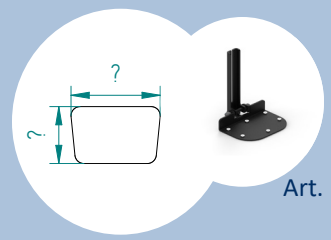
Foot plate electric folding



Art. nr.
72106

or

Single footplate, custom



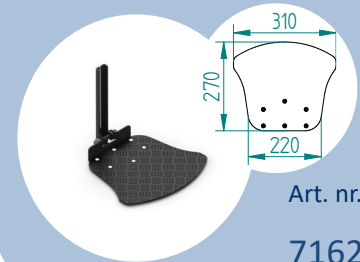
Art. nr.

98162 +71623
See page 47 for order form

or

Choice D: footrest

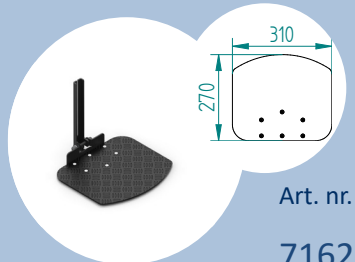
Foot plate one



Art. nr.
71627

or

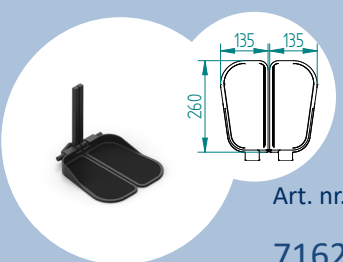
Foot plate one



Art. nr.
71626

or

Foot plate to



Art. nr.
71628



You can configure your Central legrest manuel. The legrest must be composed of 4 parts, choice C can be avoided if there is no need for it.
Select below:

Choice A :base Width

Central legrest Base



Central legrest manuel elev. BASE (B00) w400-520mm

Art. nr.
71631

or

Central legrest Base

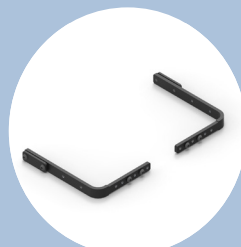


Central legrest manuel BASE (B00) W520-640mm

Art. nr.
71632

Choice B: Bracket for mounting

Cornorbraket

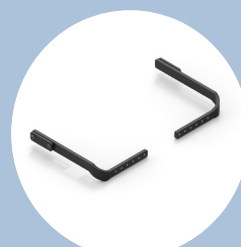


Cornorbraket mounting set straight

Art. nr.
71633

or

Cornorbraket



Cornorbraket mounting set displaced

Art. nr.
71634

Choice C: Calfsupport

calfsupport



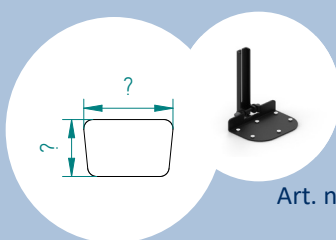
Calfsupport for cetral legrest Set left + right

Art. nr.

Standard **71636**
Large **71637**

Choice D: footrest

Single footplate, custom



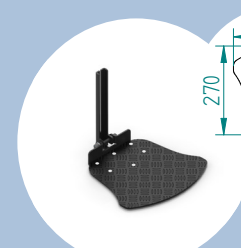
Art. nr.

98162 +71623
see page 47 for orderform

or

Choice D: footrest

Foot plate one

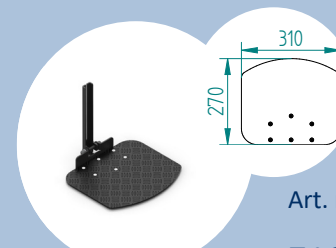


Art. nr.

71627

or

Foot plate one

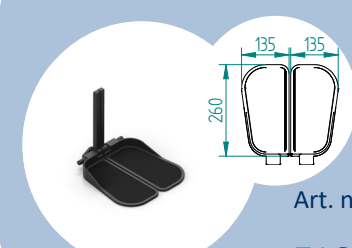


Art. nr.

71626

or

Foot plate to

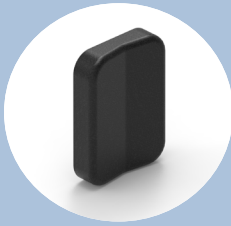


Art. nr.

71628

Leg elevation ass.

Calf pad soft



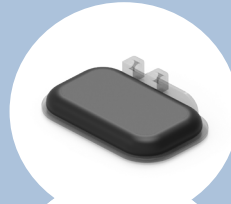
Calf pad soft foam with leather 150x210mm. (without mounting bracket)

Art. nr.

One piece

73362

Foot plate leather cushioned



Foot plate - foam and leather for higher comfort - avoids pressure wounds (1 pc. for "seperate" footrest)



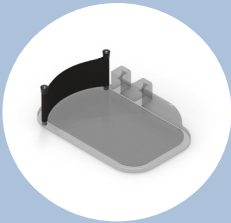
Art. nr.

soft 2 cm
supersoft 7 cm

69323

69324

Soft heelcounter



Soft leather heel caps 48 mm - attaches with straps (complete set - incl. 2 pc. for "seperate" footrest)

Art. nr.

Set for "seperate" foot rest

90122

Foot cushions for center console support



Foot cushions for center console support

Art. nr.

Right
Left

An-21151

An-21152

Amputation leg support



Amputation leg support

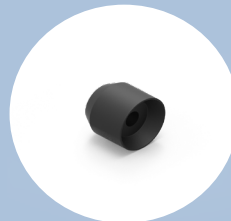
Art. nr.

Left
Right

71971

71970

Spacer



Spacer bushing for leg support 2-piece

Art. nr.

One piece

66483




R- Net

R-net is a multi-module control system for the control of rehab-type power-chairs.

While being simple and easy to install and use, the system is highly flexible and expandable with connection of up to fifteen modules being possible.

A key feature is the ability to provide a simple, two module solution at a competitive price, but maintaining the ability to address even the most complex rehab requirements. There are no restrictions on compatibility between Joystick Modules, Power Modules and Intelligent Seating/Lighting Modules. In short, modules can be mixed-and-matched to provide the optimum of performance and cost.

R-Net Joystick LED basic



Basic Joystick	
Art. no.	75044

The LED Joystick Modules offer an entry-level product that is both stylish and ergonomic.

- Ergonomic and stylish design
- Easy to operate pushbuttons
- High visibility LEDs
- With lighting control
- Charging socket

The LED Joystick Modules offer an entry-level product that is both stylish and ergonomic. The positions of the LEDs and the buttons, as well as the operating forces of the buttons, have been chosen to make the Joystick Module as user-friendly as possible. Furthermore, high-intensity LEDs have been used to ensure they are visible in even the very brightest light.

The joystick module can control drive and seating, as well as any other system mode as long as there is a suitable display. Of course, both versions also contain a convenient, industry-standard charging port.

R-Net CJSM Joystick with display & light



Joystick display/light	
Art. no.	75000

Color LCD Joystick Modules provide a modern and highly aesthetic user display, which enhances the appearance of the whole powerchair.

- Ergonomic and stylish design
- Easy-to-operate pushbuttons
- Hi-resolution graphics color LCD
- Large and clear screen icons
- Two jack sockets as standard
- On-Board Programming (OBP) option
- With lighting control
- Charging socket

The size of the graphics on the screen has also been optimized to make them as large as possible to reflect the operating condition of the wheelchair. The positions of the display and the buttons, as well as the operating forces for the buttons, are chosen to make the Joystick Module as user-friendly as possible.

R-Net CJSM2 Joystick - advanced



Joystick Advanced		
		with bluetooth and mouse
Art. no.	75045	75072

The World's Most Advanced Joystick Module

The next-generation R-net Joystick Modules set new standards in user-interfaces – not least from the inclusion of a large, high-resolution and modern LCD screen.

Crisp graphics are made as large as possible to reflect the operating condition of the wheelchair. Large, high-resolution 3.5" VGA color display.

- Infra-Red (IR) Control as standard
- Integrated Bluetooth control as an option
- Stylish and ergonomic design
- Built-in light sensor to automatically adjust screen brightness
- Paddle switches for easy access to user controls
- Enhanced programming and customization options
- Speaker for enhanced horn volume
- Metal case for improved robustness
- Connect-and-Go

Additionally, easy-to-operate paddles switches are included as standard for on/off, profile, mode and speed adjustment selection, meaning that existing joystick module variants which include toggle switches and potentiometers are no longer required. There is also a significant amount of new programmability related to the user controls; for example the speed adjustment paddle can be programmed to momentary or continuous operation.

Joystick module for dual attendant



Dual Attendant	
Art. no.	75017

Attendant Module


The R-net Attendant Module can be connected to any point in the system communications bus and can then provide control of drive, seating and any other function that is present.

- Simple transfer to/from user control
- Attendant speed control and display
- Attendant control of seating functions
- Attendant control of all other modes

The R-net Attendant Module can be connected to any point in the system communications bus and to provide control of drive, seating and any other function that is present. Transfer of control between user and attendant is via a simple pushbutton, with additional keys for setting the attendant's drive speed and accessing other system modes.

Traditional attendant systems are set so that the user can never gain control from the attendant. However, for maximum flexibility, the R-net can be programmed to allow this exception to happen should it be required.

External control for power functions



	w. control for R-net 75000	w. control for R-net 75045
Art. no.	72172	72173

External control for power functions (Model 2008)

This unit allows the driver to operate all the chairs functions directly on the separate control panel allowing the chairs joystick to stay in driving mode.

If the chair is equipped with R-nets most sophisticated joystick-solution (75045) the functions unit can be operated simultaneously with driving the chair. Can be mounted on either side of the chair. (Typically on the armrest)

External handheld control for power functions



	w. control for R-net 75000	w. control for R-net 75045
Art. no.	73400	73401

The ROLTEC handheld control box features a classic ROLTEC design and is made with very high quality and a superb finish. It is used for CJSM and CJSM2.

Omni Speciality Control Interface from PG Drives Technology



	Omni2
Art. no.	75093

The R-net Omni provides a universal Specialty Input Device interface with a large, easy-to-read, color LCD screen.

- General R-net interface for specialty controls
- Large, hi-resolution color display
- Dual channel inputs
- User selectable display - indoors/outdoors
- Customizable user menu
- Large, easy-to-read icons
- Programmable user text
- On-board configuration/programming
- Compatible with all R-net Input Devices
- Can control all powerchair functions
- Infra-Red (IR) control as standard

The next-generation Omni2 sets new standards in universal specialty control – not least from the inclusion of a high-resolution, 3.5" full VGA screen. Reflecting a family-look with the recently introduced CJS2, the clear and crisp graphics are made as large as possible to indicate the operating status of the powerchair. The new, aesthetically-pleasing, two-section design, features an ultra-slimline display. This includes an in-built light sensor that automatically adjusts screen brightness for improved visibility in sunlight or reduced glare in environments such as the cinema. All of the Specialty Input Device (SID)

mo-Vis all-round Joystick



Two connection options	All round Joystick	
	R-NET bus	Omni
Art. no.	MV-P002-75	MV-P002-71
(Light)	MV-P002-76	MV-P002-72

The All-round Joystick is a compact version of the standard electronic wheelchair joystick module. As the name suggests, this joystick has been developed for all-round use and is suitable for the major part of wheelchair users. This fully proportional joystick has a compact housing and 2 jack inputs for switches

- Fully proportional joystick with standard amplitude and power requirement (250 gr)
- Also available in a light version : see "All-round Joystick Light"
- Built in a compact and discreet housing with possibility of 1 or 2 "satellite switches" to connect directly via integrated insert parts
- Switches for on/off function or mode button, so directly connectable
- All-round use: can be used as a chin joystick, standard joystick, attendant joystick
- Built-in interface with sophisticated electronics: joystick adaptable to individual capabilities and needs
- Free downloadable software to configure joystick via PC (equipped with a mini USB port)
- Delivered with Quick-to-mount (Q2M) Rods and Clamps
- Omni, R-net, Easy Rider, e-fix Alber, Otto Bock Curtis and DX compatible (for Easy Rider, Efix, Otto Bock Curtis or DX, a supplementary interface is required)



	Movis Foot Control Omni	
Art. no.	MV-P021-51	

The Foot Control is a proportional control which can be connected directly to the wheelchair electronics. The user can operate it with their feet as it is specifically designed for people who find it easier to control their electric wheelchair with their foot. Through this control, movements of the foot can be converted into steering and control of the wheelchair.

This control has an Omni cable with SUB D9 connector

- Low (6 cm - 2.36 in) and proportional
- Additional safety brackets for the frontside are available
- Two switches can be linked to the separate interface: (red) on/off power wheelchair - (yellow) mode of the power wheelchair
- Fully adjustable to individual possibilities and needs with well-thought-out electronics (USB-C connection)
- Compatible with multiple types of wheelchair electronics
- Has a LED light on the interface which will start to flash red in case of error or orange in case of active tilt. There's also a LED light on the Foot Control which will indicate warnings/errors.
- To make sure that the Foot Control maintains its functionality, regular maintenance is required

mo-Vis Micro Joystick



To tilslutningsmuligheder	Micro Joystick	
	R-NET bus	Omni
Art. no.	MV-P002-52	MV-P002-51

This Micro Joystick is a small proportional joystick, especially designed for people with poor or weak muscular power and/or restricted movement.

- Very small proportional joystick which can be controlled with minimal force (+- 8.5 gr)
- Joystick can be controlled by finger, lip, tongue, ...
- Ergonomic design for easy use
- Supplied with two ends: a small ball and a tub
- Due to the high sensitivity mainly to be used by people with neuromuscular diseases
- Separate interface with sophisticated electronics: joystick adaptable to individual capabilities and needs
- Free downloadable software to configure joystick via PC (equipped with a mini USB port)
- Delivered with Quick-to-mount (Q2M) Rods and Clamps
- Omni, R-net, Easy Rider, e-fix Alber, Otto Bock Curtis and DX compatible (for Easy Rider, Efix, Otto Bock Curtis or DX, a supplementary interface is required)

mo-Vis Multi Joystick



To tilslutningsmuligheder	Multi Joystick	
	R-NET bus	Omni
Art. no.	MV-P002-62	MV-P002-61

The Multi Joystick is designed to be used as chin joystick, but thanks to its flexibility, it can easily be controlled by other parts of the body. As the name says, this joystick is multifunctional and can be controlled by chin, finger, lip etc..

In our product range, the Multi Joystick is situated between the Micro Joystick and the standard All-round Joystick.

- Pure proportional joystick with reduced amplitude and force requirement (50 gr)
- Built in a compact and discreet housing with two 3.5 mm jack inputs for switch input
- 1 or 2 switches (like e.g. Twister) can be immediately plugged as on/off or mode switch
- Recommended for people with tetraplegia or neuromuscular diseases (ALS, MS..)
- Light version of the standard joystick and therefore ideal for use as a chin-, lip- or finger joystick
- Separate interface with sophisticated electronics: joystick adaptable to individual capabilities and needs
- Free downloadable software to configure joystick via PC (equipped with a mini USB port)
- Delivered with Quick-to-mount (Q2M) Rods and Clamps
- Omni, R-net, Easy Rider, e-fix Alber, Otto Bock Curtis and DX compatible (for Easy Rider, Efix, Otto Bock Curtis or DX, a supplementary interface is required)

mo-Vis Heavy Duty Joystick



To tilslutningsmuligheder	HD Joystick	
	R-NET bus	Omni
Art. no.	MV-P002-77	MV-P002-73

The All-round Heavy Duty Joystick is a durable version of the standard All-round Joystick with enlarged throw and force.

As the name suggests, this joystick has been developed for persons with excessive force development like spasticity, dystonia or users with extreme hypertonicity.

This fully proportional joystick has a compact and solid housing with 2 jack inputs for switches.

- Fully proportional joystick with increased amplitude and high power requirement (650gr - 22.93 oz)
- All-round Heavy Duty use : can be used as joystick to be operate with the hand, the foot, ...
- Switches for on/off function or mode button, so directly connectable
- Fully adjustable to individual possibilities and needs
- Easily configurable with the free mo-Vis Configuration software
- Omni, R-net, Easy Rider, e-fix Alber, Otto Bock Curtis and DX compatible (for Easy Rider, Efix, Otto Bock Curtis or DX, a supplementary interface is required)



(R-net) Dual Port isolated USB Charger, 3 Amp

The Dual Port isolated USB Charger can be used to charge any USB-powered device with a power consumption of up to 3 A. The unit is powered by the wheelchair (24 V) and will transform the 24 V input voltage to an USB output voltage.

N.B
The charger only functions when the chair is turned on.

N.B.
Connects to powered wheelchairs with R-net electronics

	USB
Art. no.	MV-P010-61



The Multi Switch unit enables the use of a single input device to control up to four outputs. This offers more operating options to the user with just one single input.

- One 3.5 mm stereo input jack to connect a mechanical switch
- Two 3.5 mm stereo jacks to connect up to four separate outputs
- Usb powered (usb charger, power bank, laptop, tablet,...)
- Fully adjustable to individual possibilities and needs
- Easily configurable with the free mo-Vis Configuration software
- Different select modes : Click, Start & Scan, Hold and Scan
- Different output modes : momentary/timed or switched
- 2 operation modes: locked/unlocked in any output
- Maximum 4 active outputs
- Auditory and visual feedback
- Different time settings: debounce, select, close and quit time
- Different auditory feedbacks: input-, select-, output- and quit beep

	Multi Switch
Art. no.	MV-P014-40



Gyro Module

Gyro technology adds an extra dimension to controlling a wheelchair, by maintaining the desired drive direction irrespective of the external forces acting on the wheelchair. Gyro technology adds an extra dimension to controlling a wheelchair, by maintaining the desired drive direction irrespective of the external forces acting on the wheelchair.

- Gyro technology for superior drive control
- Supports faster drive speeds on front-wheel-drive wheelchairs
- Eliminates spin-out
- Eliminates fish-tailing
- Perfect control on cambers
- Straight line driving over obstacles
- Dual gyros for enhanced safety
- Multiple mounting orientations
- Operates with standard Power Module

Straight Line Control

If the wheelchair is driving across a non-level surface, for example a camber, then to achieve straight line driving the user has to make frequent steering corrections. This is inconvenient when using a joystick, but becomes difficult when using a switch-type controlling device, such as a switch pad or head array. A further challenge in maintaining straight line driving is presented by obstacles, such as kerbs or door thresholds, particularly if they are of uneven height. The Gyro Module vastly improves control in all of these situations.

	Gyro
Art. no.	75033



Hand Warmer

Keeps the area around the electric wheelchair's input device warm, which improves the flexibility of cold hands and fingers.

To better maintain the air temperature around the hands, a Perspex dome-shaped 1 hand hood is available as an option. The dome reduces heat loss, resulting in a decreased power consumption, without compromising comfort. It is delivered with four hook and loop fasteners pads to attach the dome to any flat surface. The dome openings can easily be adjusted

	Hand Warmer	
	Warmer	Dome
Art. no.	MV-P013-62	MV-012-33

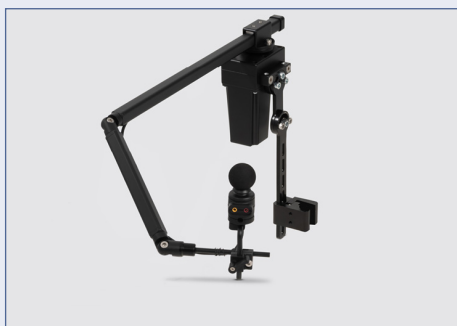


Manual Swing 2G

The Manual Swing 2G is a versatile arm to mount on an electrical wheelchair. With this arm, devices such as chin joysticks can be positioned to drive, and the arm can be moved upwards or sideways manually, whenever needed.

	Manual Swing 2G
Art. no.	MV-P031-22

Mv-P031-22 Manual Swing 2G Arm Bundle Q2M



Elektrisk Swing 2G

A versatile, motorized mounting arm to mount on an electrical wheelchair. With this arm, devices such as a chin joystick can be positioned to drive, and the arm can be moved upwards or sideways by pressing a button whenever needed.

	Elektrisk Swing 2G
Art. no.	MV-P031-63

Mv-P031-63 Multi Swing 2G Arm Bundle Q2M



Chin Control Harness

With the Chin Control Harness you can mount a joystick on the chest of the user. This is one of the mo-vis options for chin control of your electrical wheelchair

	Harness
Art. no.	MV-M013-61

Ass. parts

Fisso Articulated Arms



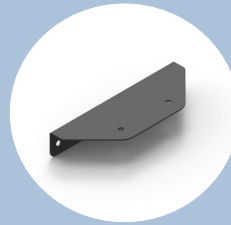
With the turn of a single knob, they can be clamped securely in place or released for repositioning. They hold their positions without risk of being jostled out of place and provide stable, safe and maintenance-free use throughout their lifetimes. The precise engineering and exceptional quality.

Art. nr.

Articulated Arms

90218

Mounting bracket



Bracket for R-Net Bus splitter to CT4/ Python/HD /VIPER

Art. nr.

Bracket-CT4/ Python/HD VIPER

71279

Cup bracket



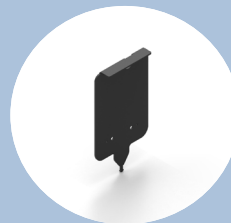
RAM Level Cup 16oz Drink Holder with Drill-Down

Art. nr.

RAM cup bracket

90236

Mounting bracket



Holder for Omni2 without mounting arm

Art. nr.

Bracket

72027

Phone Holder



RAM X-Grip® Large Phone Holder with Ball

Art. nr.

RAM Phone Holder

72201

RAM mounts



RAM mounts

Art. nr.

RAM mount 1" Arm 90229

RAM mount 1" Arm in 90227

2 balls f. fixed mounting

RAM mount 1" double 90228

ball

Mounts

Swing mount



Bracket
Swing mount for
Joystick Module

Art. nr.

Right
Left

71682
71683

Protective Shield



Protective Shield
for CJSM (75000)

Art. nr.

Protective Shield

73393

Fixed mount



Bracket
fixed mount for
Joystick Module

Art. nr.

Right
Left

70291-R
70291-L

Mounting bracket



Bracket mounting
for External control
for power functions
on a fixed bracket

Art. nr.

Mount f. controlbox 2008
Mounting tube f. swing

71429
71963

Mounting bracket



Bracket mounting
joystick for dual
attendant Joystick
Module

Art. nr.

Right
Left

71891-R
71891-L

Mounting bracket



1-hand operated
attendant module
without control
box Roltec / R-net

Art. nr.

Attendant module

71076

attendant



	Art. no.
Attendant	71507
LED	71508
CJSM	71509
CJEM2	71510

attendant control packages

Fittings, control box and cable.

attendant



	Art. no.
Attendant	71687
LED	71688
CJSM	71689
CJEM2	71690

attendant packages

1-Hand operated attended modul, with controlbox and cable.

Scoot Control R-net without mounting bracket (not packages with fittings)



	Art. no.
Mo-vis	MV-P015-61

Scoot Control R-net without mounting bracket (not packages with fittings)

Fully proportional handle bar with 2 rubber handles and 2 configurable thumb throttles.

Built in compact housing, with a 3.5 mm stereo jack to connect an external actuator keypad (Curtiss-Wright CJSM2 compatible). (E.g. mo-Vis' Actuator Keypad)

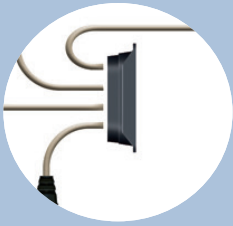
Full access to wheelchair functions such as Lights, Horn and Speed settings.

Battery and speed display via LEDs.

On-board configuration possible.

Compatible with multiple types of wheelchair equipped with R-net electronics.

R-net Connector

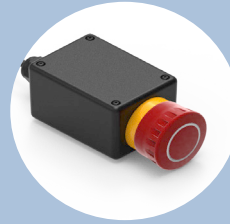


R-net Connector Block

Art. nr.

R-net Connector Block 75019

Emergency stop



Emergency stop

Art. nr.

Emergency stop 90254

R-net Cables



R-net Cables

Art. nr.

0.3 meter	75003
0.5 meter	75004
1.0 meter	75005
1.2 meter	75006
1.5 meter	75007
2.0 meter	75008
2.5 meter	75009
3.5 meter	75010

Remote stop

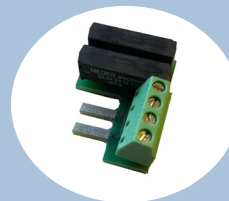


Remote stop

Art. nr.

Remote stop 90230

R-Net relay



R-Net relay box for actuator output 2 relays.

R-Net relay box that makes one actuator output switches to 2 relays outputs

Art. nr.

R-Net relay box 71265

Ass. parts

Twister Basic



The Twister basic can be mounted on a plate of metal/plastic with 2 screws or can be integrated in a tray or other flat surface.

Art. nr.

150cm cabel
30cm cabel

MV-P005-70
MV-P005-15

Twister button



The Twister basic is mounted in a plastic holder for mounting.

Art. nr.

plastic holder

MV-M005-23

Piko Button



30mm in diameter
75g pressure

Art. nr.

Black 20cm cabel
Black 150cm cabel

90244
90245

Twister on bend-



The Twister is attached to a mo-Vis Quick-to-mount bended tube of 10 cm (3,94 in) and 6 mm (0,236 in) diameter. Twister on bended tube can be mounted using the Quick-to-mount clamps to attach to other rods or wheelchair.

Art. nr.

150cm cabel
30cm cabel

MV-P005-50
MV-P005-60

Piko button - water resistant



Waterproof
30 mm in diameter
125 g pressure

Art. nr.

Black(30 mm) 150cm cabel 90246

Satellite Twister



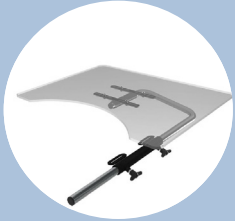
The Twister is equipped with an insert to mount on the All-round Joystick.

Art. nr.

MV-P005-40

Table

Table width



mounted on armrests

Art. nr.

90000

Tabel "C-profil"

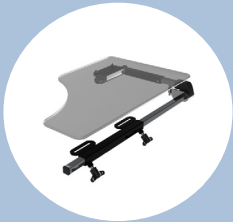


mounted in c-profile

Art. nr.

AN-20502

Table half



mounted on armrests

Art. nr.

69334

Ass. parts

Lights and indicators

Lights - front and rear



Led lights - front
and rear (led)

Art. nr.

CT4/Python/HD	71071
VIPER	70950
BOA/BOA2	69280
MOVEO	71883

Separate Indicator Lights



Separate Indica-
tor Lights (led)

Art. nr.

CT4/ Python/HD	71475
VIPER	71475
BOA/BOA2	69320
MOVEO	71940

Chargers

Chargers



EC-Buddy
10A - lader/XLR

Art. nr.

One piece	71066
-----------	-------

Chargers



Cellpower
12A - lader/XLR

Art. nr.

One piece	73363
-----------	-------

Joystick Knob Options



Joystick knob options available to fit the PGDT products

Art. nr.

Grab (standard)	75031
Ball B38	75040
Chin C38	75038
Mushroom M48	75037
Soft Ball SB70	75036
Stick S30	75041
Stick S80	75039
T-Bar T80	75042

Joystick Knob golfball with logo



Joystick knob golfball available to fit the PGDT products

Art. nr.

GofBall	95097
---------	-------

Gel Batteries From Exide/Sonnenschein for CT4/Python/HD/VIPER/BOA/Moveo+

Battery



Battery 56 Ah*/51 Ah
(single)

Art. nr.

CT4/Python/HD/VIPER/
BOA/Moveo+
(You must order a set of 2)

60735

Battery



Battery 80 Ah*/72 Ah
(single)

Art. nr.

CT4/HD/Pythoa/VIPER
(You must order a set of 2)

60337

Batteries From Cellpower for CT4/Python/HD/VIPER/BOA/Moveo+

Battery



Battery Cellpower CPXC-
78-12-HE 78 Ah
(single)
On Boa2 and Moveo also
requires "bat kit"

Art. nr.

CT4/Python/HD/VIPER/
BOA/Moveo+
(You must order a set of 2)

73384

Battery



Battery Cellpower
CPX125:125 Ah*/105 Ah
(single)

Art. nr.

CT4/HD/VIPER/PYTHON
(You must order a set of 2)

72176

*Ah of the battery tested according to the C20 standard.

C20 = Discharging the battery for 20 hours at a constant current until to its terminal voltage (usually about 1.75 volts)

Battery capacity varies. Manufacturers will normally specify several discharge rates (in amperes) along with the associated discharge time (in hours). When the battery is discharged at a constant rate of current over a number of hours, this is referred to as the "C" rating. Many batteries are rated at the C20 rate, which means that they will deliver their amp hour capacity if discharged over 20 hours.

Battery pack	Moveo+ FRONT WHEEL DRIVE	CT4/Python REAR WHEEL DRIVE	HD- HEAVY DUTY REAR WHEEL DRIVE	PYTHON REAR WHEEL DRIVE	VIPER FRONT WHEEL DRIVE	BOA2 CENTER WHEEL DRIVE
EXIDE Battery 56Ah/51Ah	72092	72069		72069	72067	72066
EXIDE Battery 80Ah/72Ah		72070	72070*	72070	72068	
Cellpower Battery 78Ah	72104**					69297**
Cellpower Battery 125Ah/105 Ah		X	X	X	X	

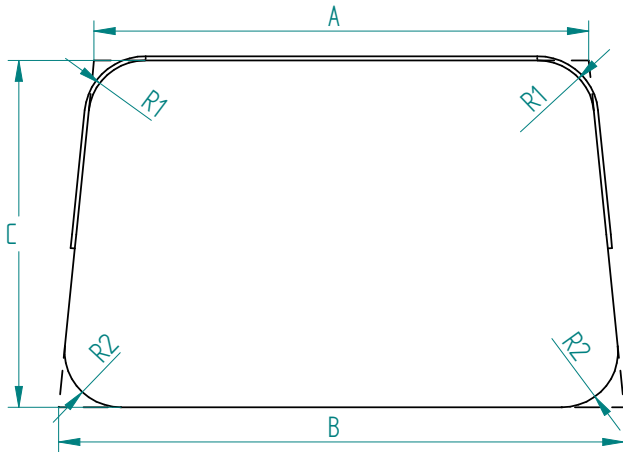
* HD is included/with EXIDE Battery 80Ah/72Ah.

**BOA and Moveo if needed choose cellpower 78Ah batteries, this will increase the chairs height with 2 cm.

If there are battery problems, a battery optimizer can be used to advantage, which will distribute wear on the batteries. It has the item number 72339.

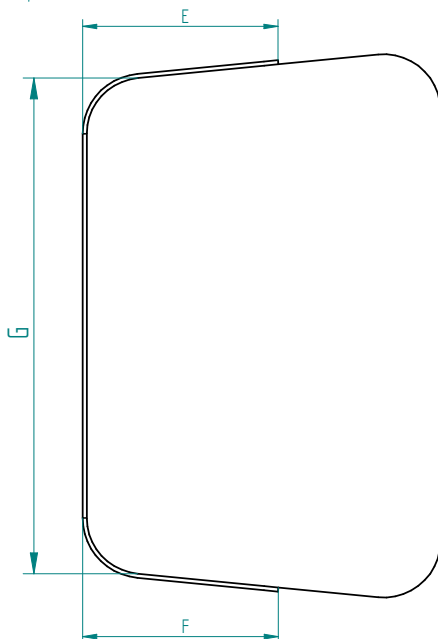
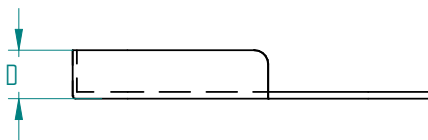
Order guide: Custom footplate for central legrest

Made of aluminium
Powder coated matte black



A (Back width) _____mm (max. 700mm)
 B (Front width) _____mm (max. 700mm)
 C (Depth) _____mm (max. 550mm)
 R1 (Back radius)* _____mm (Default: 40mm)
 R2 (Front radius)* _____mm (Default: 40mm)

*Unspecified parameters will be manufactured using Roltec's Default dimensions



Footplate Guard Rail:
Leave blank if not wanted

D (Height) _____mm (max. 120mm)
 E (Length, left side) _____mm
 F (Length, right side) _____mm
 G (Width) _____mm

Note: The addition of a footplate guard rail will add 3mm to Footplate Depth (C) and 2 x 3mm to Footplate Width (A & B)

002129-01-Rev_1



Company's headquarters:

ROLTEC el-kørestole A/S • Lægårdsvej 13, DK - 8520 Lystrup • Telefon +45 87 43 49 00 • Telefax +45 87 43 49 29

Website: www.roltec.com

Mail: info@roltec.com