

# Image 3



exclusive design to meet all your needs

# Image 3 exclusive design to meet all your needs



Image 3 Standard



Image 3 Washable

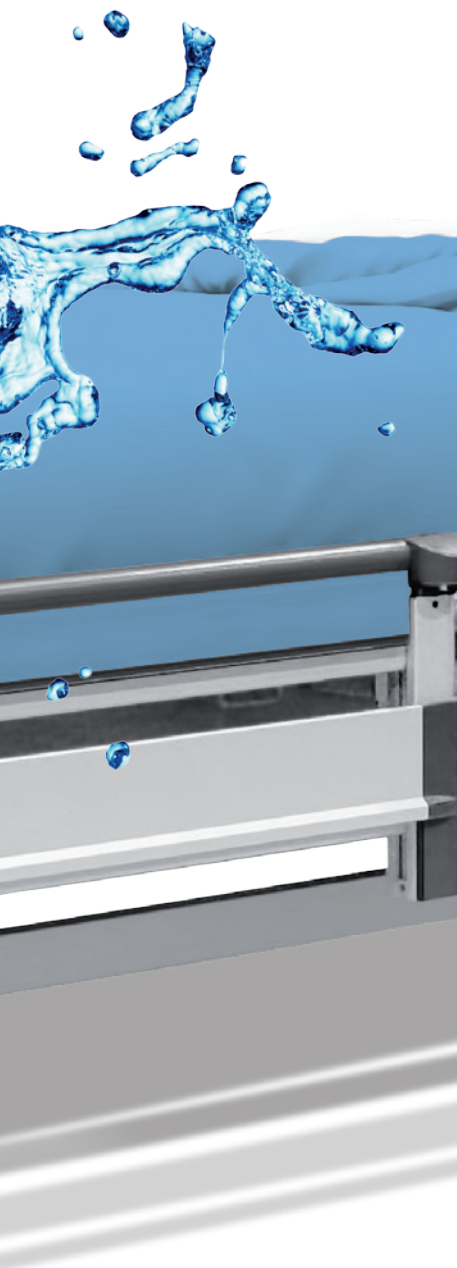


Image 3 XXL

# Benefits of Image 3





- Extra low position to prevent falls
- Support for independent mobilisation
- Unique modern design hand in hand with high comfort



Patient

- Sophisticated ergonomics for comfortable handling
- Automatic preset functions
- Easy bed hygiene



Staff

- Universal use – standard, bariatric and washable version
- Variable solution to meet the needs of individual clients
- High standard of infection control



Management

# Meeting everyone's needs



## Image 3 WASHABLE

The bed is available in a version suitable for cleaning and disinfection in automatic hospital washing machines.

**WASHABLE**  
**FRIENDLY**

- The bed construction undergoes a special technological modification that increases its service life and durability.

## Image 3 STANDARD

The modern design of the Image 3 bed will find its universal use in hospitals.

- By choosing the version, design and accessories, the bed can be adapted for a specific purpose.
- The attractive design of the bed helps to create a cozy and pleasant environment in health facilities.





## Image 3 XXL

Bariatric version of Image 3 meets the growing demand for beds with higher load capacity.

- The bed has a wider mattress platform.
- The safe working load is increased to 320 kg.
- Its construction and accessories are safe even for a higher load.

**WIDER** BED

**HIGHER** LOAD

# Variable design

HOSPITAL  
DESIGN



EXCLUSIVE  
DESIGN



UNIVERSAL  
DESIGN



The design of the bed is timeless and suitable for a broad spectrum of needs in hospital care. Image 3 Standard, Washable and XXL fully respect the highest ergonomic principles in healthcare.



Due to its classic concept, the hospital design suits standard healthcare practice and in addition offers a version specially adapted for cleaning in automatic hospital washing machines.



The exclusive design is enhanced by a combination of aluminium elements and wooden decors. The elegant look has a comforting effect and creates a beautiful environment for both the patients and staff.



The simple design offers a compromise of the bed's unique practical features in an economic version.

# Patient safety

Safety is a key parameter for the Image 3. All the bed's functions are designed so that the patient can not just feel, but really be as safe as possible.

## Ergoframe®

The special mattress platform positioning significantly reduces the risk of pressure ulcers.



## Hygiene

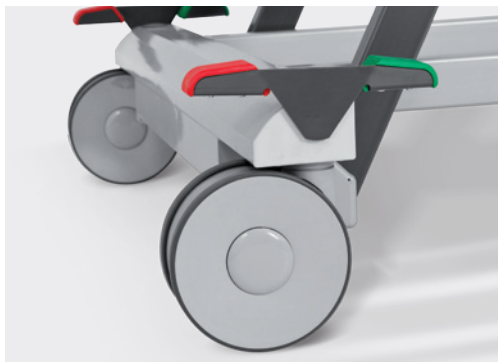
Thanks to the shape and material of its construction, the bed and its design elements are easy to clean.



## **BRAKE** Alarm ))

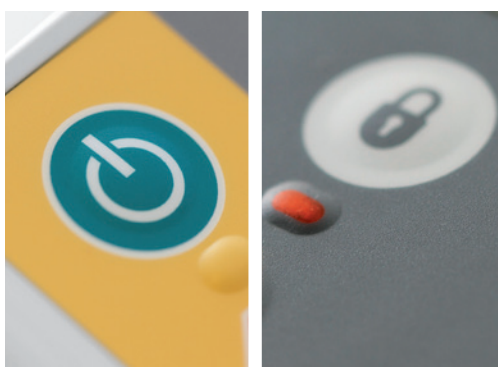
### Brake alarm

A sound signal will notify the nursing staff of the need to brake the bed to ensure the client's maximum safety.



### GO Button

Thanks to this patented safety concept, the bed's controls lock after three minutes of inactivity.



### Functions lock

The electrical functions of the bed can be simply locked.



### SafeFree® siderails

4 different adjustable heights of siderails. No required additional space beside the bed folding. Covered full length of bed sides



### SafeSense

The SafeSense bed exit alarm warns the staff when the patient leaves the bed.



# 3-STOP strategy

EXAMINATION  
POSITION



MOBILISATION  
POSITION



EXTRA LOW  
POSITION





### Examination position

- The highest bed position provides the staff with ideal ergonomic conditions for work.
- Comfortable nursing procedures and care.
- The position provides complete access to the bed for cleaning and disinfecting.

80  
cm



### Mobilisation position

- Preset functions on the control panel for simple mobilisation.
- In combination with the siderail handle, the position simplifies and supports the mobilisation of the patient.
- The ideal setting for cleaning in an automatic hospital washing machine.

40  
cm



28  
cm

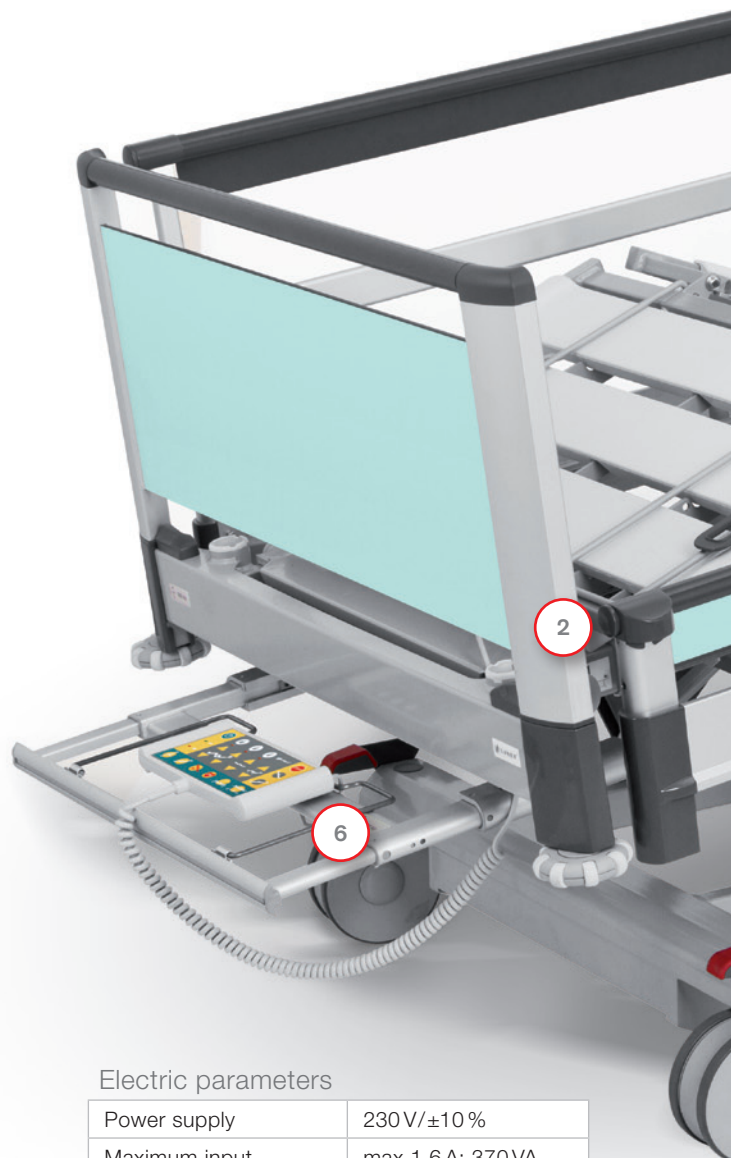


### Extra low position

- Separate button as a preset function on the control panel.
- Fall prevention.
- Safe position for sleeping.

# Practical details

- 1 **5<sup>th</sup> castor**  
facilitates comfortable handling in all spaces
- 2 **Bed extension**  
to three different levels according to the client's individual needs
- 3 **Night light**  
for the patient's safe orientation
- 4 **3D corner bumpers**  
protect the bed in a horizontal and vertical position
- 5 **Mattress platform width**  
optional mattress platform width 86 or 90 cm with removable plastic parts
- 6 **Linen shelf**  
may also be used to store the supervisor panel
- 7 **Mechanical CPR**  
for emergency use



## Electric parameters

Power supply	230 V/±10 %
Maximum input	max 1.6 A; 370 VA
Protection against water and dust	IPX4 (IPX6 for Image 3 Washable)

## Certificates

LINET is certified according to European standards and the quality system: ČSN EN 9001:2000 ČSN EN 13485:2003
The products are manufactured according to European standards for healthcare technology and hospital beds: ČSN 60601-1, ČSN 60601-2, ČSN 60601-4, ČSN 60601-2-52, ČSN EN ISO 14941 Image 3 Washable: AK-BWA:2009

## Color concept

offers great variability: metal or plastic parts in silver or white color and a head ends with panels in decors of the customer's choice.





Technical parameters	Image 3 (Standard, Washable)	Image 3 (XXL)
External dimensions	221 × 104 cm / 220 × 99.8 cm*	220 × 110 cm*
Mattress platform dimensions	200 × 86 / 90 cm	200 × 100 cm
Clearance	13 / 15.5 cm	13 / 15.5 cm
Mattress platform height adjustment	28–80 cm	28–80 cm
Bed extension	10; 22; 30.5 cm	10; 22; 30.5 cm
Maximum mattress height	18 cm (split siderails); 17 cm (single collapsible siderails)	26 cm including the extender
Safe working load	265 kg (Standard) / 265 kg (Washable)	320 kg
Bed weight	160 kg *, **	160 kg *, **
Backrest tilt	0–70°	0–70°
Thighrest tilt	0–34°	0–34°
TR/ATR tilt	0–14°	0–14°

\* by configuration; \*\* by accessories

# Image 3

Patient

- Extra low position to prevent falls
- Support for independent mobilisation
- Unique modern design hand in hand with high comfort



- Sophisticated ergonomics for comfortable handling
- Automatic preset functions
- Easy bed hygiene



Staff

Management

- Universal use – standard, bariatric and washable version
- Variable solution to meet clients' needs
- High standard of infection control



 **wissner-**  
**bosserhoff**

 **LINET®**

Members of LINET Group

**LINET spol. s r. o.**

Želečnice 5 | 274 01 Slaný | Czech Republic

tel.: +420 312 576 400 | fax: +420 312 522 668 | e-mail: [info@linet.com](mailto:info@linet.com) | [www.linet.com](http://www.linet.com)

